



WILLS RIDLEY LTD

Specialist in Marine Hydraulic Steering Systems



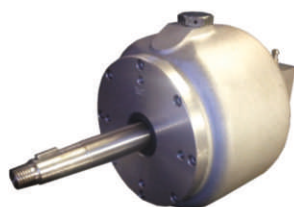
Helm Pumps



SB10 Helm Pump
Output—164cc Per rev.
Material—Bronze
Military Grade



S10 Helm Pump
Output—164cc Per rev.
Material—Aluminium



Triton 507
Out put—50cc Per rev.
Material—Aluminium

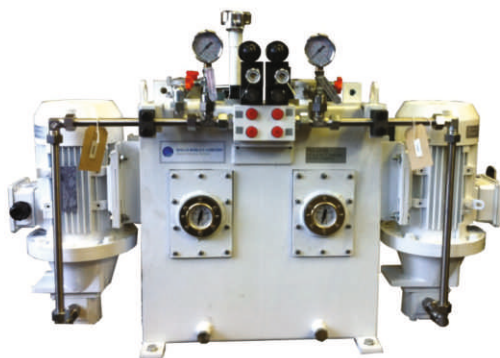


Tetra Series
Output—Various from 18cc
per rev up to 250cc per rev
Material—Aluminium



Neptune Series
Output—Various from 77cc
per rev up to 119cc per rev
Material—Aluminium





Power Packs can be driven by an electrical motor, directly from a PTO or by a belt.

24v DC, 3 phase and single phase motors are available and each power pack can have more than one motor. Either be one duty and one standby or both Power Packs can run together.



The power pack will be designed to suit customer requirements, the power available on board and to comply with Classification Society rules if required.



Pictured are some examples of previous power packs with dual and single motors, both tank mounted and motor mounted separately.



Power Packs



Power pack motor starters & remote starter cabinets are designed to suit customer & classification society requirements.



Electrical Starter





Electrical Controls



Full Follow Up Lever



Full Follow Up Knob



Full Follow Up
Electric Helm Unit



Non Follow Up Joystick



Non Follow Up Wheel



Electrical Controls Card (ECC)

A cost effective version of the Steering Control Unit. Providing full follow up control and electrical synchronisation of multiple rudders.





The torque figures given below are based on a standard working pressure of 55 BAR with 69 BAR relief.

J Series Hydraulic Actuator

From 43—176 KGM



KS Series Hydraulic Actuator

From 75—650 KGM



R Series Hydraulic Actuator

From 775—2140 KGM



U Series Hydraulic Actuator

Unbalanced Hydraulic Actuator where the Bore, Piston Rod and Stroke can be modified to suit customer requirements.



Hydraulic Actuators



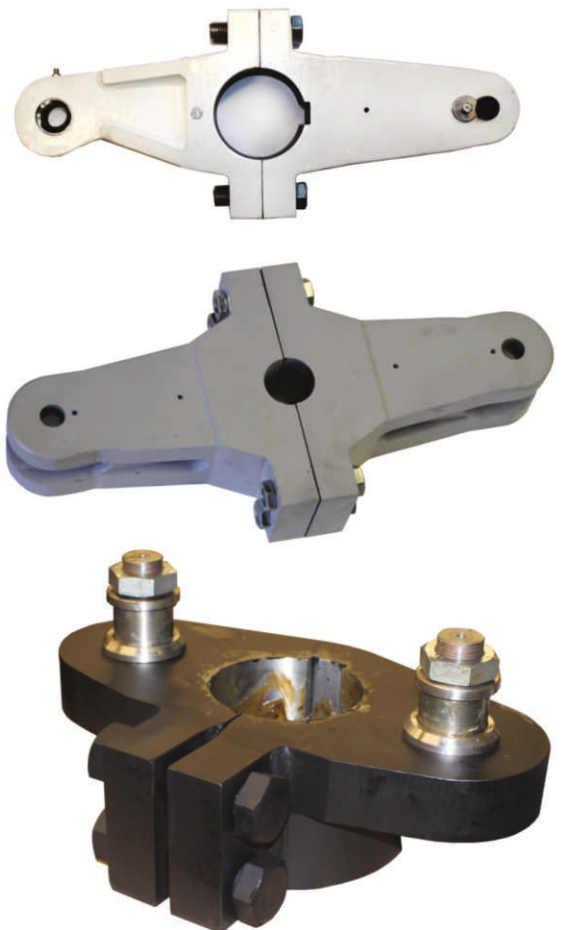


Tillers are designed to suit the Hydraulic Actuator, Torque requirement and Rudder Stock. Wills Ridley provide the following options:

Option 1. The Tillers are designed, manufactured, finish bored and keyed to suit the rudder stock.

Option 2. The Tillers are designed and manufactured with a pilot bore for the customer to finish bore and key locally to suit the Rudder Stock

Option 3. Wills Ridley provide the design only for local manufacture (Can be stamped by classification society if required.)



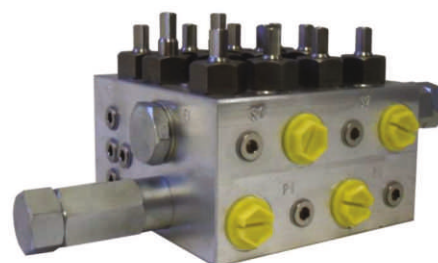
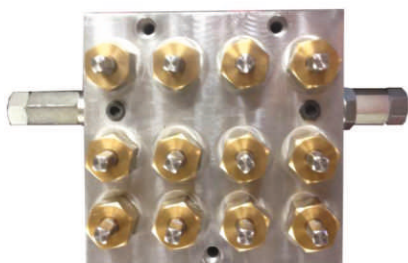
Tillers





A range of different pressure relief and
Bypass/distribution valves are available.

The Steel valves are Zinc plated and the Aluminium valves are
anodised to prevent corrosion



Valves





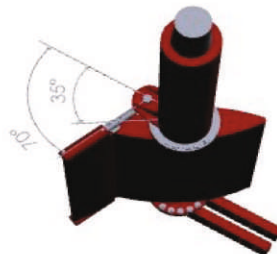
Wills Ridley offer three options for Rudders:

Option 1. Design and ,manufacture the Rudder and Rudder Tube Assembly

Option 2. Manufacture the Rudder to a final Rudder drawing from the customer.

Option 3. Design only, for local manufacture by the customer (stamped approved drawings by classification societies can be provided if required)

Rudders





Location

Wills Ridley 's head office and manufacturing facility is situated approximately three miles from one of the deepest natural harbours in the world – Falmouth, Cornwall in the U.K. This natural resource brings a wide variety of vessels all year round. Therefore this area has a wide range of maritime companies situated here.



Wills Ridley Ltd

Unit 1, Kernick Business Park,
Penryn, Cornwall, TR10 9EW

Contact our international service help line
+44 (0) 1326376015

Incorporated in England 2729805



Indian agent

parikh power

Corporate office:

18, 2nd Floor, R3 Mall, Opp. Manav
Mandir, Memnagar, Ahmedabad
Gujarat-380 052.

Tel.: [+91 792 7495550](tel:+917927495550)

Mob : [+91 9657722666](tel:+919657722666)

Email: enquiry@parikhpower.in

Branch Office:

C/O Pandit Niwas, Opp.PWD Workshop,
Vasco da Gama, Goa 403802.

Ph: [+91 832 6720300](tel:+918326720300)

Factory Address:

C1/3324/1, GIDC Chhatral, Taluka-Kalol,
District-Mehsana, Gujarat-INDIA