



# SUPERIOR MODULAR DOCKS



[www.superiorjetties.in](http://www.superiorjetties.in)





# ABOUT US

## ROTATIONAL MOULDING AND MARINE APPLICATION PRODUCT EXPERTS FOR 60 YEARS

**Superior Jetties LLP** was established in Vadodara, India as a joint venture between Baroda Polyform Pvt. Ltd. (BPPL) and Superior Jetties, Australia. We specialize in the supply of high-quality marine application products across India and its neighboring countries. Leveraging a combined experience of over 60 years, our products undergo rigorous testing and meet the quality standards set by our Australian counterparts.

Sustainability is a core priority at **Superior Jetties LLP**, and all our products are fully recyclable, reflecting our commitment to environmentally responsible practices. To maintain a competitive advantage, we continuously embrace the latest advancements in design and manufacturing technologies. Our in-house design capabilities are supported by cutting-edge software for 3D modeling and finite element analysis, ensuring precision and innovation in every project. Additionally, we employ rapid prototyping and 3D printing techniques to fully evaluate and refine designs before production commences.

All products under the Superior Jetties LLP brand are exclusively manufactured by Baroda Polyform Pvt. Ltd. (BPPL) incorporating the technical expertise of the Australian parent company.

**PARTNER WITH US TO TURN YOUR MARINE VISION INTO REALITY.**



High Durability and Flexibility,  
No Reduction in Strength after prolonged use



Anti-Slip Surface



High Quality UV Stable Polyethylene



Easy Cleaning and Maintenance



Easily Mountable and Movable



100% Recyclable



Container friendly for Worldwide Shipping



Single Piece Rotationally Moulded Modules



# SMD MODULES

## BUILDING BLOCKS FOR YOUR MARINE VENTURES

The **Superior Modular Dock (SMD) System** is made from Rotomoulded Polyethylene modules that are durable, UV Stabilized, tough and slip resistant and can be configured into variety of shapes and applications. It is the main building block of Superior Jetties Floating Platform Systems.



## WIDE RANGE OF SIZES OFFER **FREEDOM TO DESIGN**

SMD Size 1  
1.5M L x 1M W  
Buoyancy: 0.60 TON\*

SMD Size 2  
2M L x 1M W  
Buoyancy: 0.80 TON\*

SMD Size 3  
2M L x 1.5M W  
Buoyancy: 1.20 TON\*

SMD Size 4  
2M L x 2M W  
Buoyancy: 1.60 TON\*

SMD Size 5  
3M L x 1.5M W  
Buoyancy: 1.80 TON\*

SMD Size 6  
3M L x 2M W  
Buoyancy: 2.40 TON\*

JET SKI DOCK  
4.5M L x 1.5M W

FORKLIFT  
Compatibility

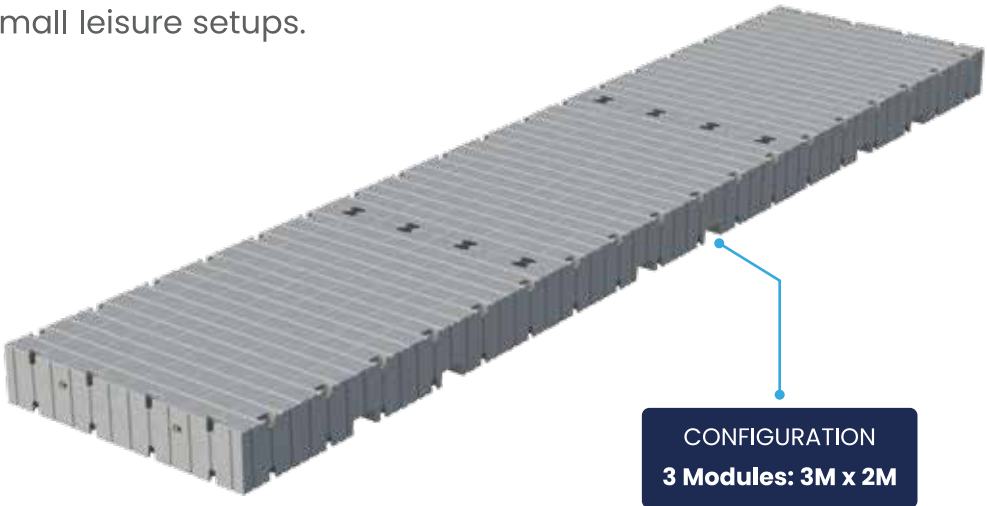
All Modules have a standard 0.4M height.

\*Buoyancy at full submersion.

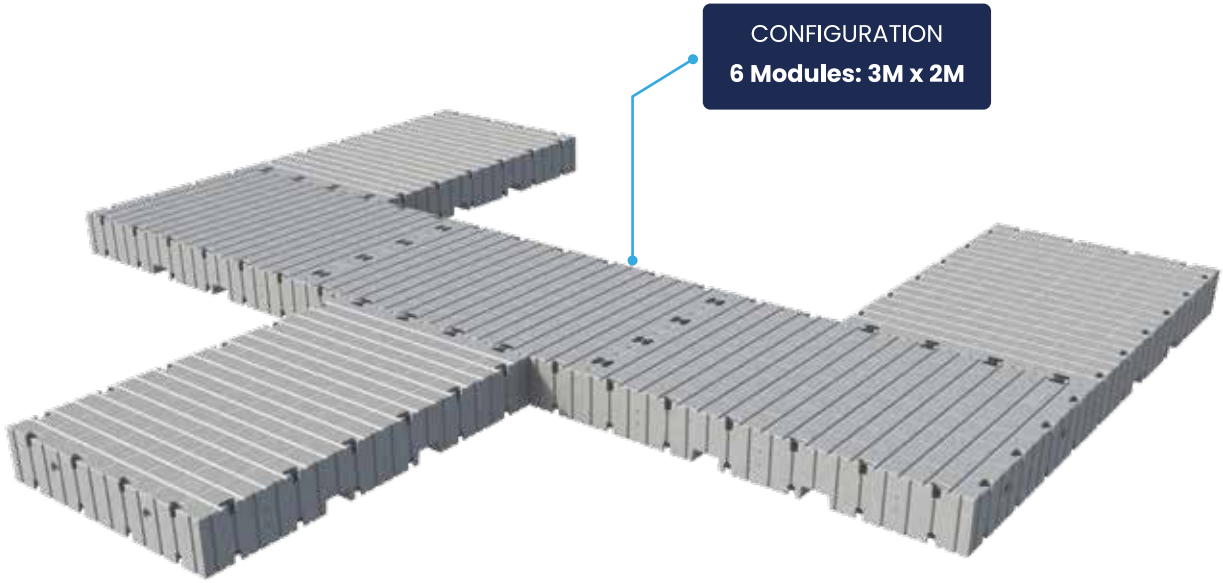


YOUR PERSONAL MARINE GETAWAY

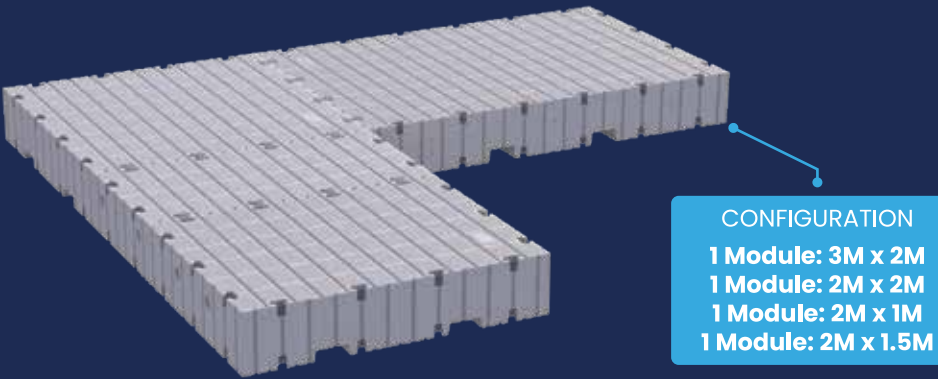
Perfect for private residences and small leisure setups.



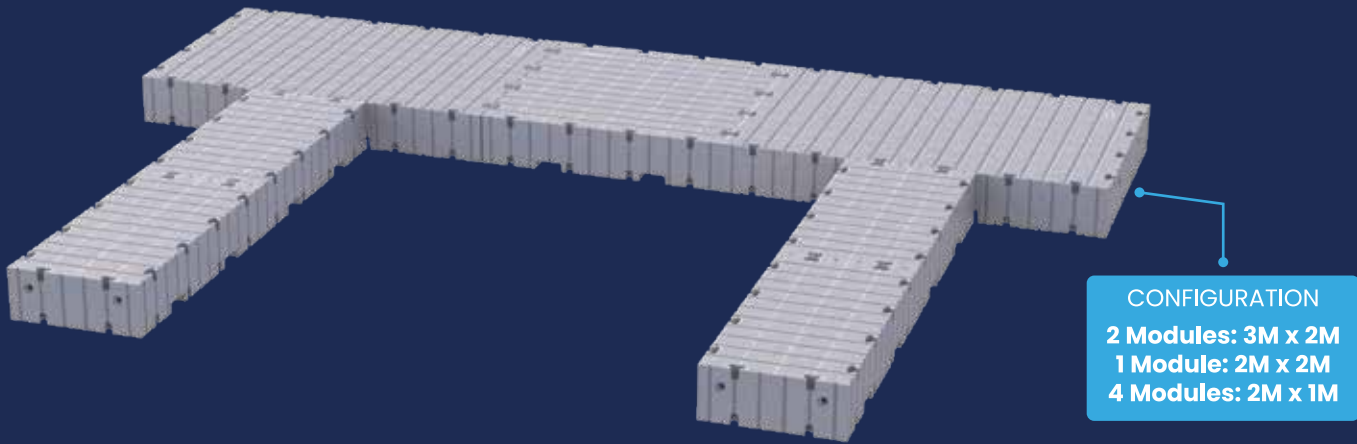
CONFIGURATION  
3 Modules: 3M x 2M



CONFIGURATION  
6 Modules: 3M x 2M



CONFIGURATION  
1 Module: 3M x 2M  
1 Module: 2M x 2M  
1 Module: 2M x 1M  
1 Module: 2M x 1.5M



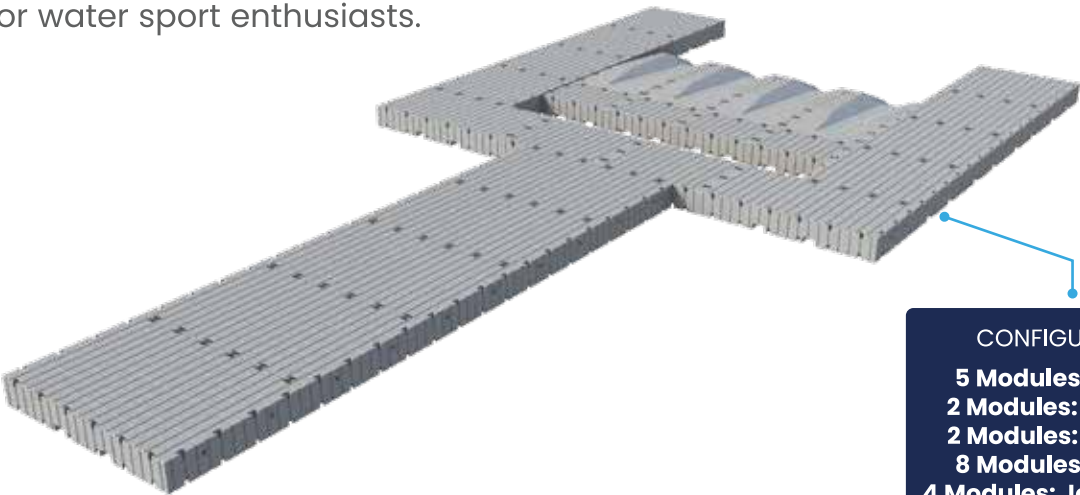
CONFIGURATION  
2 Modules: 3M x 2M  
1 Module: 2M x 2M  
4 Modules: 2M x 1M



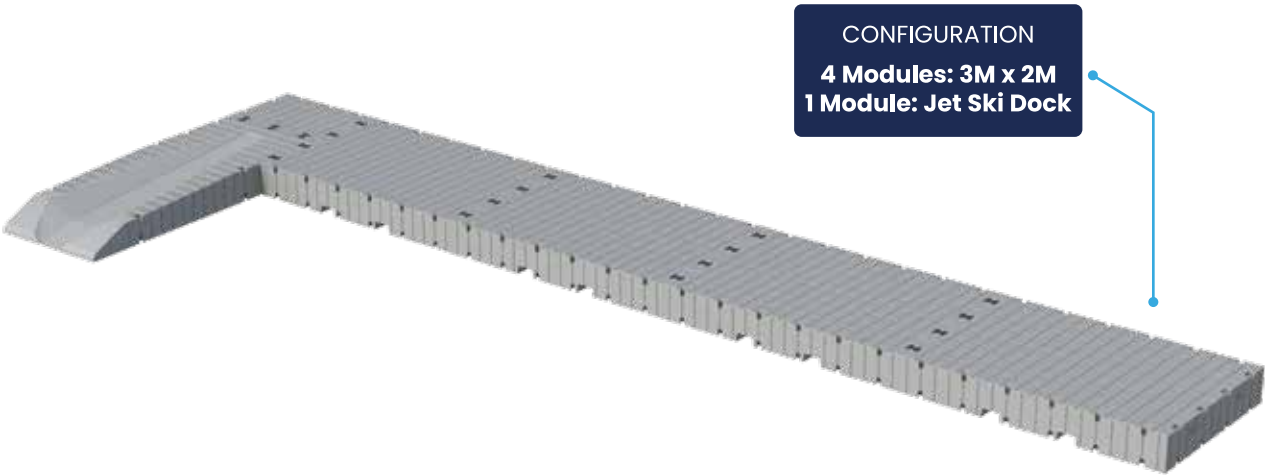


CREATIVE WATER ADVENTURES

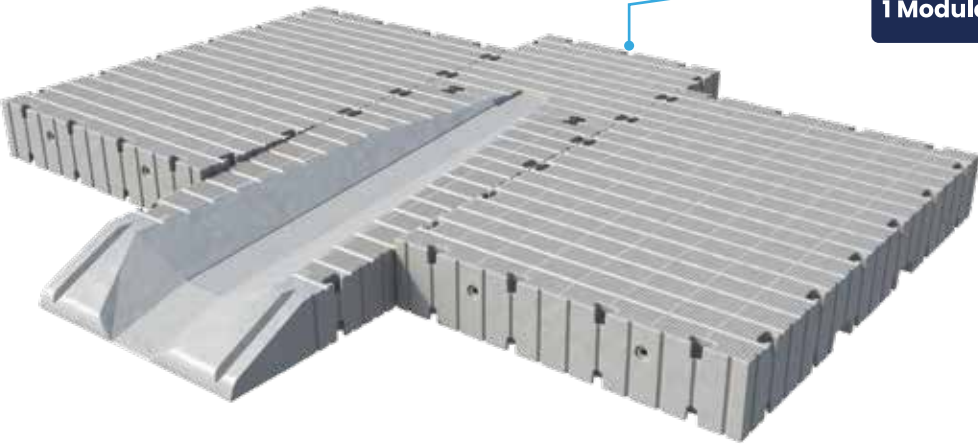
Perfect for water sport enthusiasts.



CONFIGURATION  
5 Modules: 3M x 2M  
2 Modules: 3M x 1.5M  
2 Modules: 2M x 1.5M  
8 Modules: 2M x 2M  
4 Modules: Jet Ski Docks



CONFIGURATION  
4 Modules: 3M x 2M  
1 Module: Jet Ski Dock



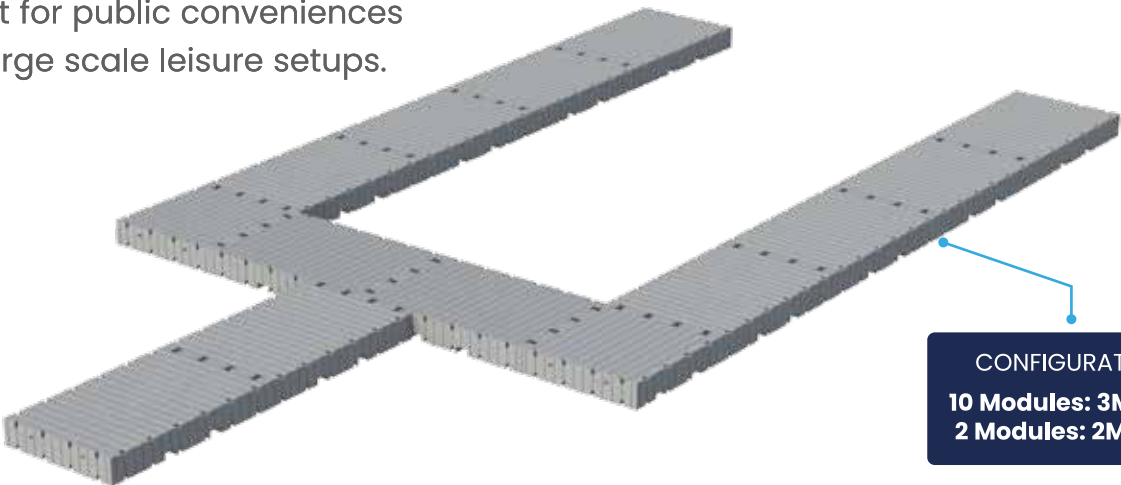
CONFIGURATION  
2 Modules: 3M x 2M  
1 Module: Jet Ski Dock



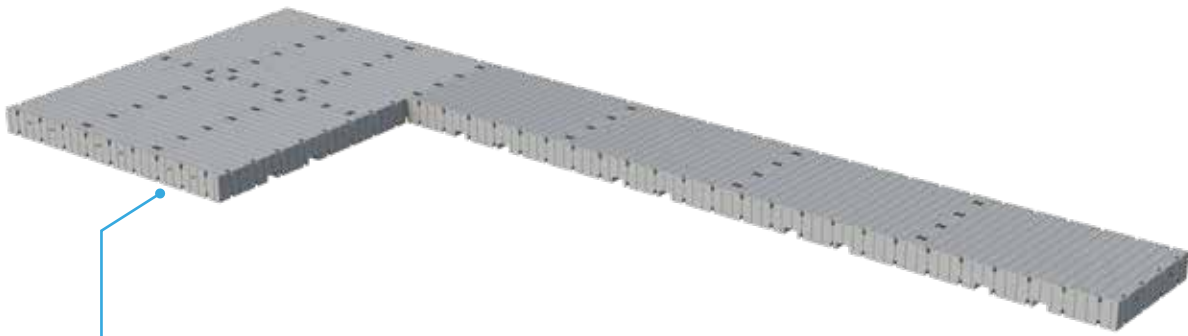


ELEVATE YOUR MARINE BUSINESS

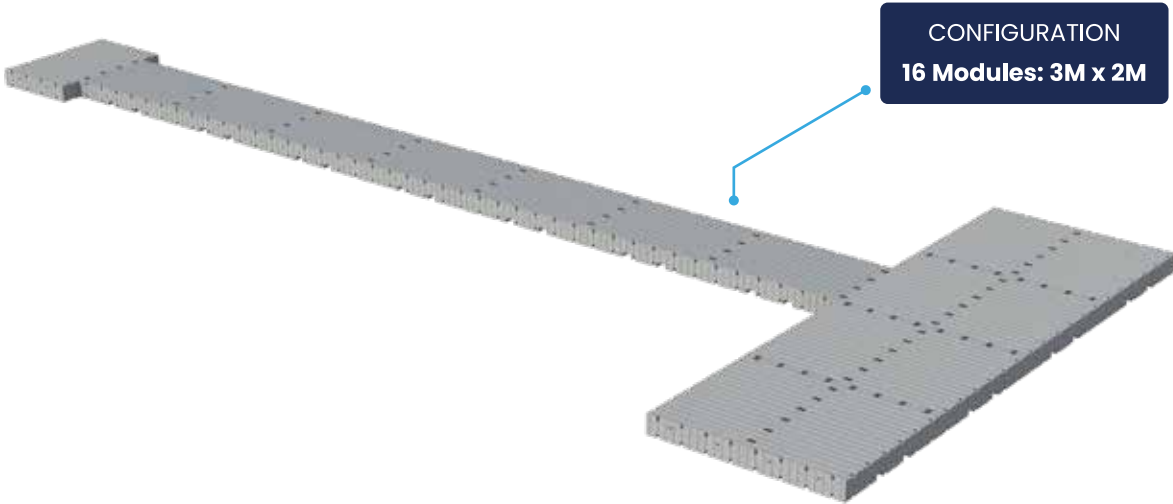
Perfect for public conveniences  
and large scale leisure setups.



CONFIGURATION  
10 Modules: 3M x 2M  
2 Modules: 2M x 2M

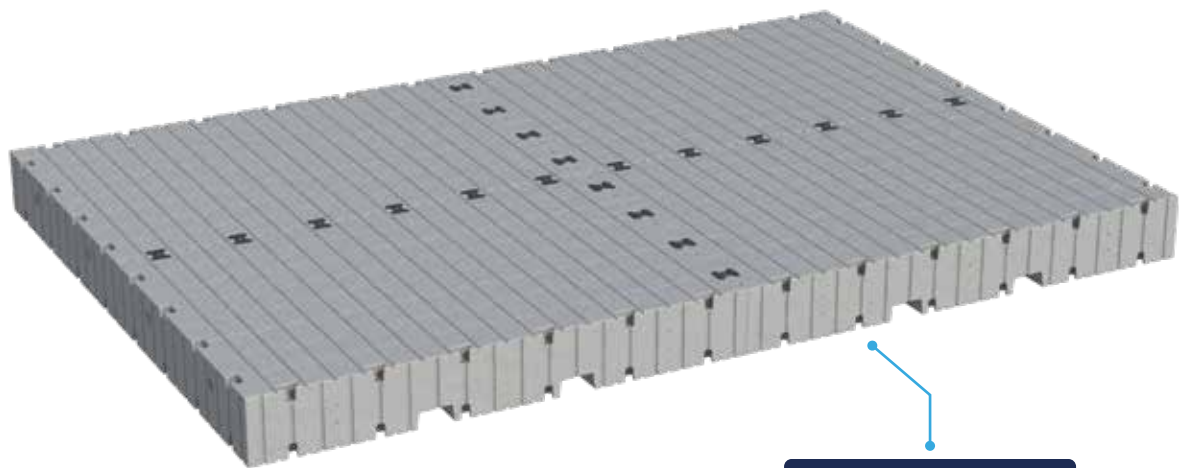


CONFIGURATION  
4 Modules: 3M x 2M  
6 Modules: 3M x 1.5M

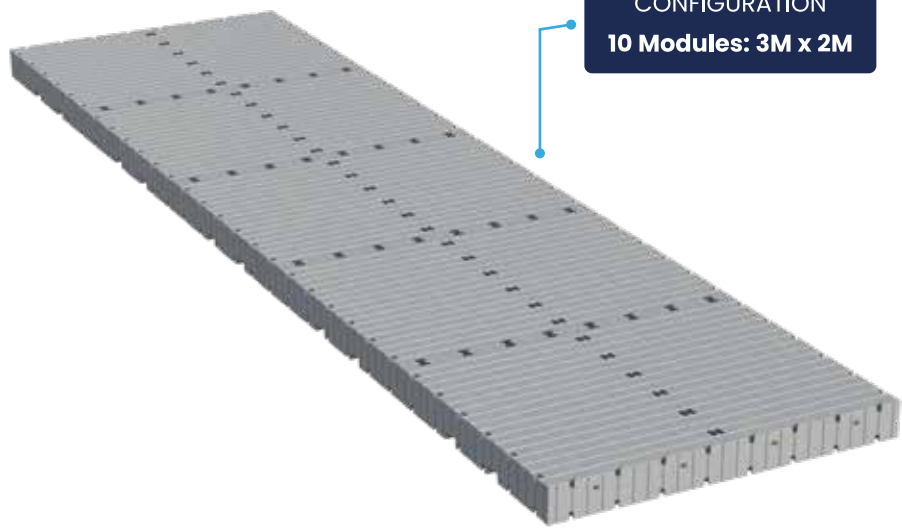


CONFIGURATION  
16 Modules: 3M x 2M





CONFIGURATION  
4 Modules: 3M x 2M



CONFIGURATION  
10 Modules: 3M x 2M



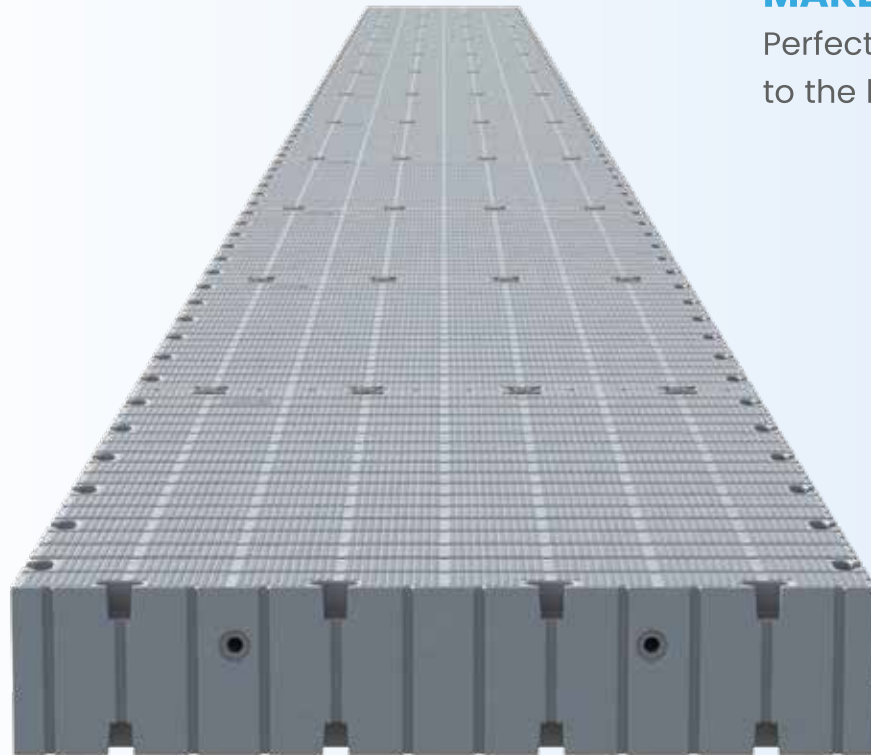
CONFIGURATION  
8 Modules: 3M x 2M



# FLOATING WALKWAYS

## MAKE YOUR OWN WAY

Perfect way to pave an access to the hard to reach places.







Floating Hotel/Stays



Hotel on Water



Structures on Jetties







Step onto greatness with Superior **ECO TILES**, your pathway to eco-friendly pontoon, platform and marine walkway flooring. UV and high force resistant, easy installation and dismantling - our **ECO TILES** have been rigorously tested by experts.



#### TECHNICAL SPECIFICATIONS

- Size: **495mm x 595mm x 50mm +3**
- Weight: **3.0kg**
- Standard colour: **Pontoon Grey**
- Load rating: **5kPa**



#### FEATURES AND BENEFITS

- Made from UV-Resistant PP.
- Perforated decking surface lets sunlight through to preserve the flora and fauna.
- High force resistance against impacts and static loads.
- Extremely resistant to weather conditions.
- Load capacity per SQM 5kpa.
- Tested to comply with AS1657-2001.
- Slip and Fire Resistant.





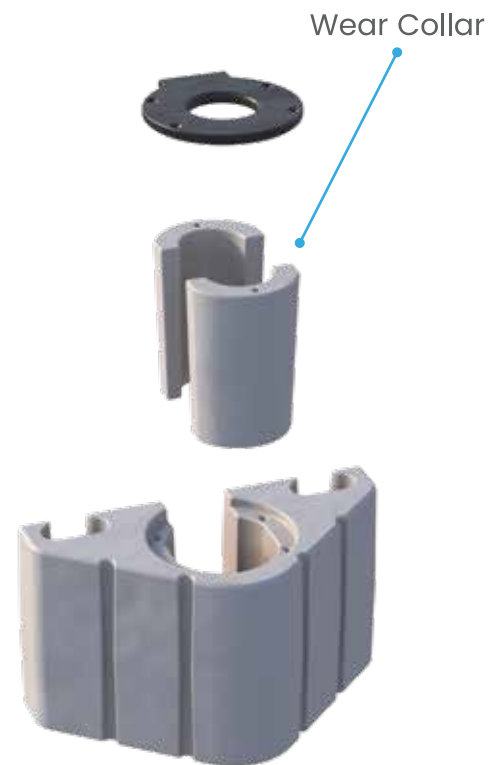
## PILED BRACKET

### DURABLE | LIGHT-WEIGHT | CORROSION RESISTANT

Engineered for durability in harsh marine environments, our adjustable Piled Brackets are made from **UV-Stabilized, High-Strength Polyethylene**. Designed for both floating and fixed docks, they resist saltwater, sunlight, and impact while offering secure lateral adjustment for **2 inch to 4 inch piles**.

Their one-piece, rotationally molded construction ensures lasting strength, easy installation, and minimal maintenance.

**Wear Collar** helps prevent direct wearing or deterioration of bracket walls when piles are inserted.



### IDEAL FOR

- Floating Docks • Marinas • Pontoons
- Coastal Infrastructure

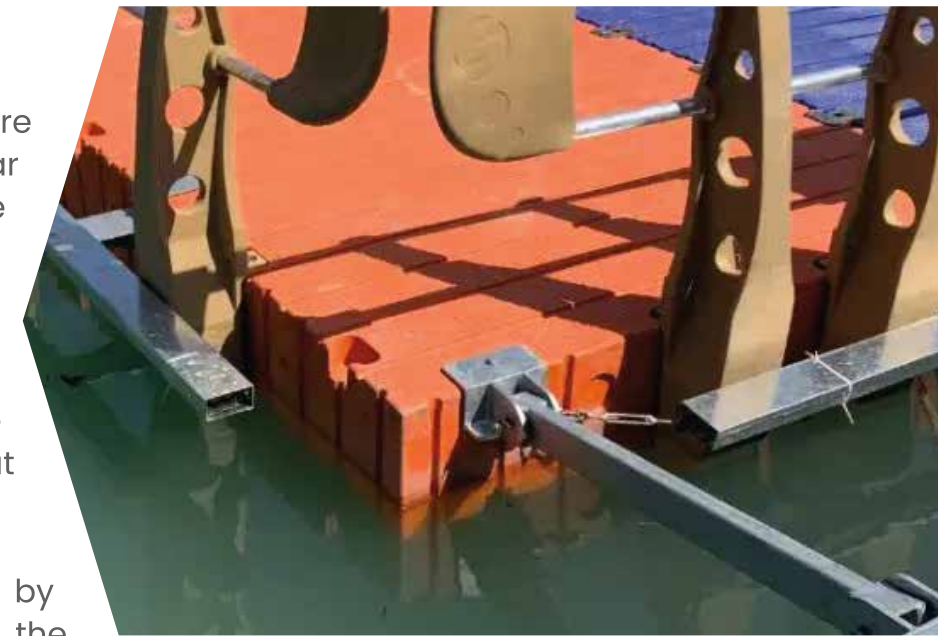
### FEATURES & BENEFITS

- One-piece rotomoulded construction
- 100% Corrosion-free
- UV-Stabilized for long-term outdoor use
- No painting or coating required
- Environmentally safe and recyclable

## STRUT

Struts (made from metal tube) are hinged at both the ends of the rear edge of a pontoon & at the concrete abutment blocks on the shore. The hinge action allows vertical movement for tidal changes & wave conditions. Diagonal braces of a SS cable are fitted between the gangway & strut for lateral support.

Pontoons can be secured by connecting a metal strut and the gangway, to amass concrete land anchor on the shore. If the conditions are suitable, this is an economical alternative. This method is suitable for the berthing of private leisure craft and public small craft in moderately calm conditions and in areas where the water is deep, or the seabed is rocky yet close to the shoreline.



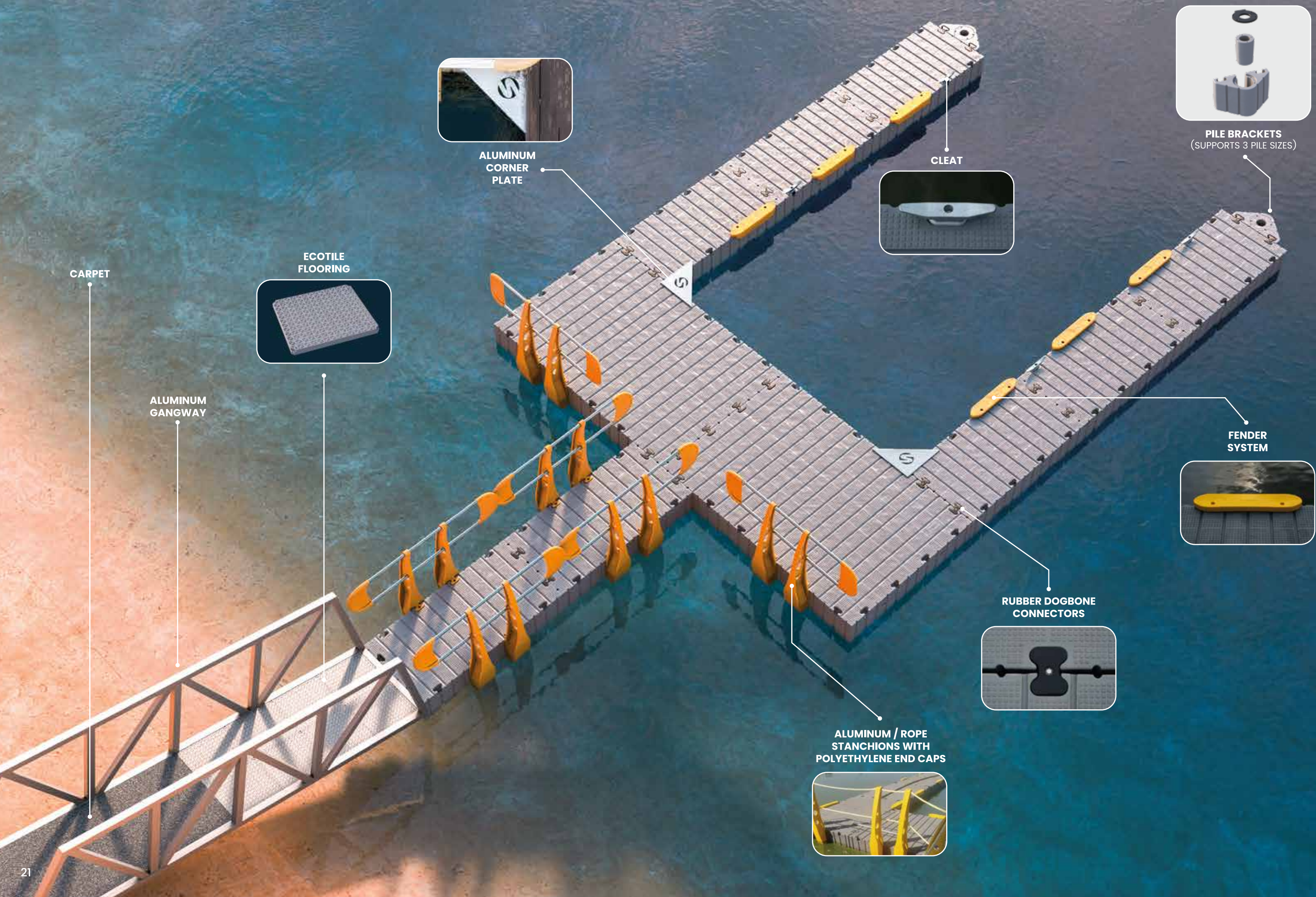
## CABLE

Cable Anchoring is the most economical method of securing a pontoon. It is also the lightweight method. The gangway is placed into compression to hold the whole structure and the vessel from the land anchor on the shore. This method is suitable for the berthing of small craft in sheltered conditions such as canal estates or lakes. Cable Anchoring is the easiest to install

and remove especially if a temporary installation is desired.

The pontoon is positioned by the gangway placed centrally and pivoted at the rear. The gangway starts from a concrete mass land anchor on the shore. Lateral support is gained by the fitting of stainless steel cables attached to the rear corners of the pontoon and the other end to two abutment blocks on the shore in line with the gangway block.

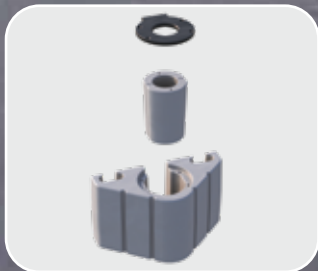




ALUMINUM  
CORNER  
PLATE



CLEAT



PILE BRACKETS  
(SUPPORTS 3 PILE SIZES)



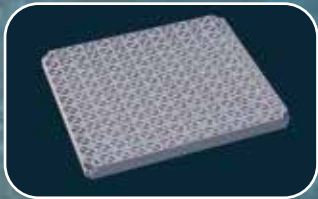
FENDER  
SYSTEM



RUBBER DOGBONE  
CONNECTORS



ALUMINUM / ROPE  
STANCHIONS WITH  
POLYETHYLENE END CAPS



ECOTILE  
FLOORING

CARPET

ALUMINUM  
GANGWAY





## **SUPERIOR JETTIES LLP**

52 Shalin Flats, Haribhakti Colony, Race Course,  
Vadodara - 390007, Gujarat, India.

**GSTIN:** 24AAXFR0097F1ZV

**Email:** sales@superiorjetties.in

**Phone:** +91 70433 54300  
+91 265 2963719

**Website:** www.superiorjetties.in

 /superior.jetties.india

 /superior-jetties-llp



Scan to know more