



MARINE HOLDINGS



**From Bow to Stern,
We 've got your ship covered**

TABLE OF CONTENT

02 About Us

03 Cleaning Services

04 Electrical-Rewinding Services

05 Mechanical Services

06 Machining Services

07 Load Testing

08 Scaffolding Arrangements

09 Steel Repairs

10 Miscellaneous Services





MARINE HOLDINGS

**From Bow to Stern,
We've got your ship covered**

ABOUT US

Founded in 2019, **Balam Marine Holdings** is your dynamic and trusted partner in the maritime industry.

In close cooperation with a strong network of competent partners, Balam develops innovative maritime projects and offers a wide range of services and one-stop solutions within the international maritime sector focused on ship repairs and maintenance.

From our main base located in the **Panama Canal region** and through associated international workshops, a highly dedicated team of experts provide technical-leading services to attend afloat and emergency repair with experienced workforce for immediate mobilization and complete the works when ships are at anchorage, alongside or during voyage reducing off-hire cost and the other expenses incurred at shipyards.

Our experience, collective knowledge and can-do attitude of our dedicated team allow us to deliver our commitment and exceed our customers expectation.

CONTACT US

Mobile: +507 6641-2858

Office: +507 383-1703

operations@balam-marine.com

service@balam-marine.com

Web: balam-marine.com



TRADE NET

256172

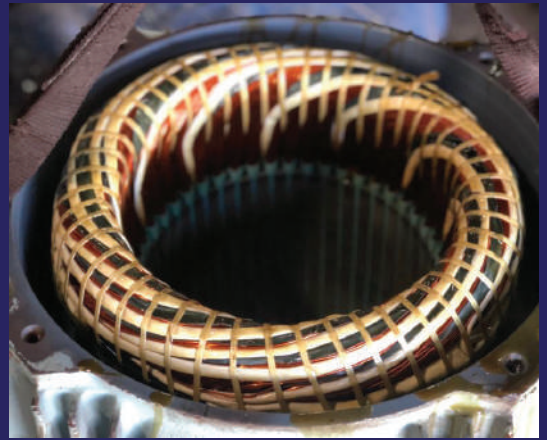
**QUALITY, HEALTH, SAFETY
AND ENVIRONMENT ABOVE ALL**



CLEANING SERVICES

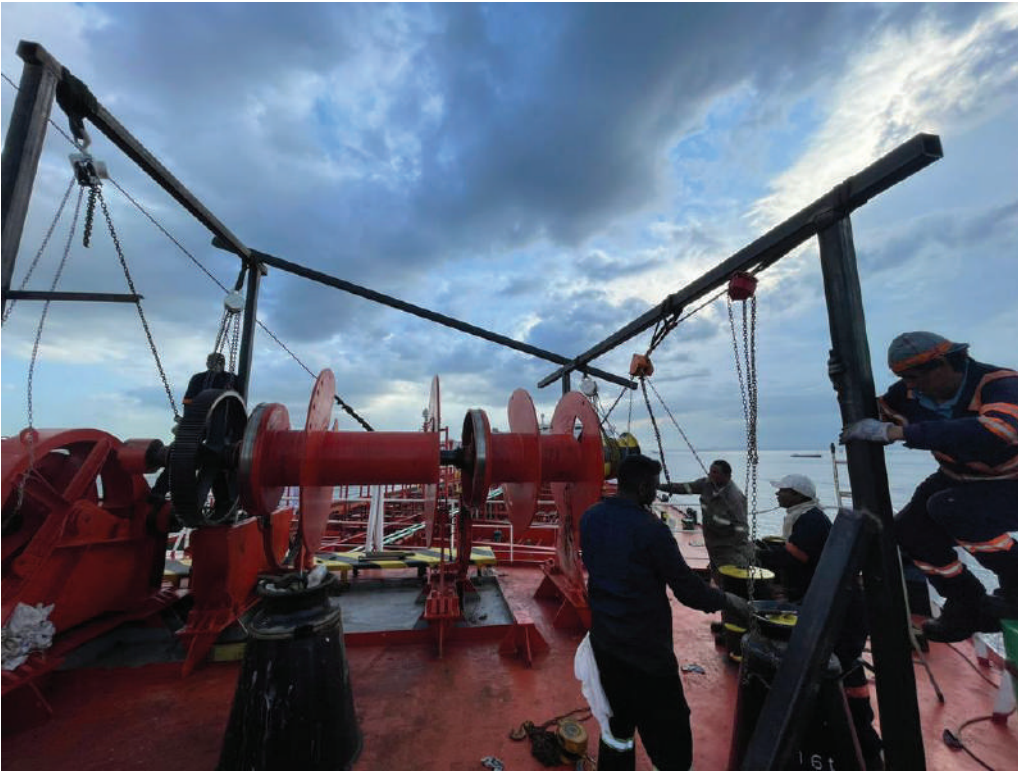
Our commitment to delivering high quality work is proven by technical expertise in each of our handpicked teams. Not only are they knowledgeable in the process of the job but also trained to the highest standards of health and safety which is essential in all our work.

- HFO tanks, FO tanks, Ballast tanks
- Cargo holds
- Bilges
- Spillage cleaning
- Post Fire Cleaning Services
- Re-handling of cargo
- Hazmat clean-up
- Final disposal of residuals through authorized treatment plants.
- Destruction of cargo through incineration and/or bioremediation



ELECTRICAL-REWINDING SERVICES

- Overhaul and/or rewinding of motors and alternators of all sizes and capacities
- Fault finding / troubleshooting
- General installation work (e.g., running of cables, fitting units and multi cable transits)
- Supply of skilled technicians for attendance at anchorage, port and riding crew work
- Fire and flooding damage repairs
- Inspection for Alternative Maritime Power (AMP) regulation
- 3D scanning
- Electrical engineering consulting
- Shaft power limitation installation



MECHANICAL SERVICES

With deep engineering and technical skills, we are able to quickly assess the requirements and get down to completing the job.

- Repair and overhaul of engine components
- Turbo charger repair with balancing
- Chrome plating reconditioning
- Repair, installation and commissioning of main propulsion and auxiliary engines
- Maintenance of heat exchangers
- Alignment and chocking
- Testing and maintenance of fuel injection pumps and valves
- In situ cylinder liners honing services
- Liner diameter measurement by scanning (LDM)
- Piston/cylinder liner replacement, overhauling services
- Pre-docking survey and recommendations
- Windlass and anchor chain repairs.



MACHINING SERVICES

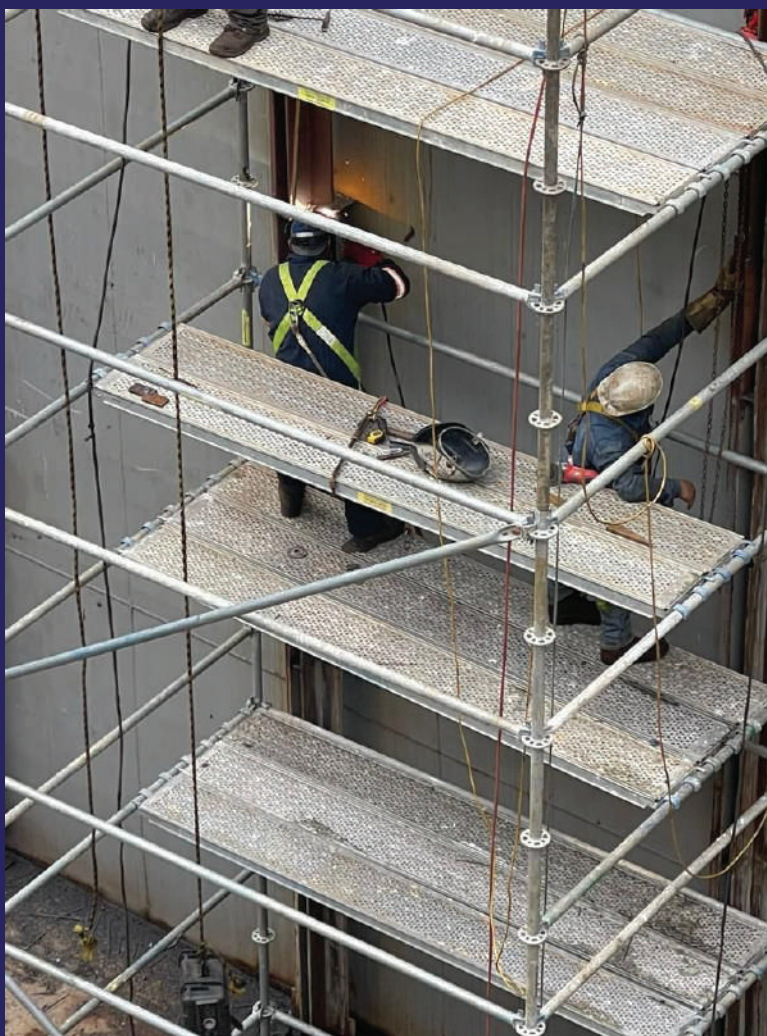
The department is composed of innovative machines and tooling, skilled operators are trained and kept up-to-date constantly to guarantee maximum quality and reliability according to customer's need with short delivery times.

Our technical skills allow us to machine all types of materials.



LOAD TESTING

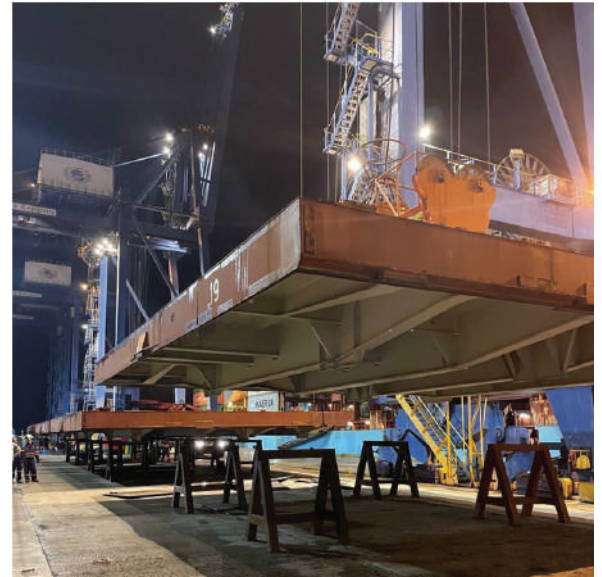
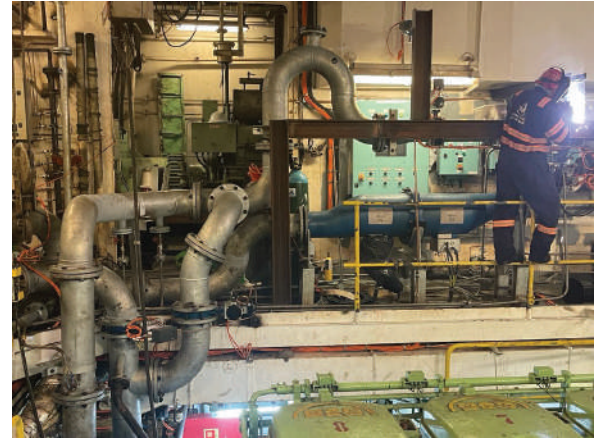
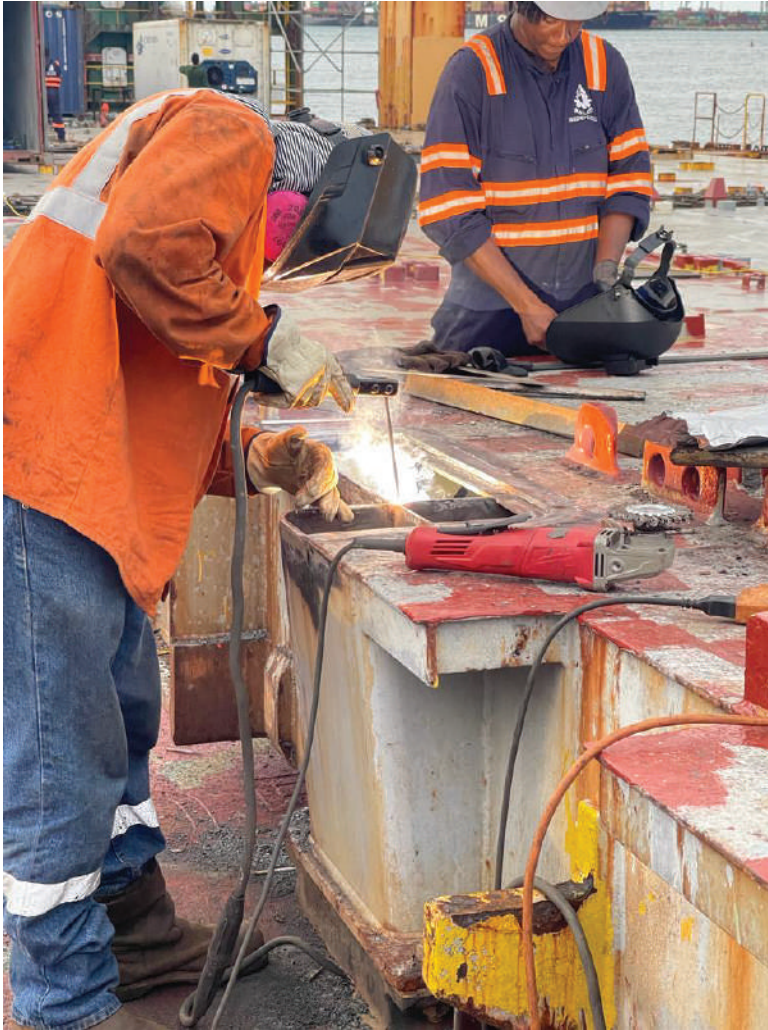
An important factor to determine the safety and proof testing along with certification for all types of cranes, gangways and lifting equipment based on the mandatory requirements for maritime standards.



SCAFFOLDING ARRANGEMENTS

Our service network provides a safe and cost-effective method of scaffolding arrangements for quick access to tanks, cranes, and other structures with difficult access.

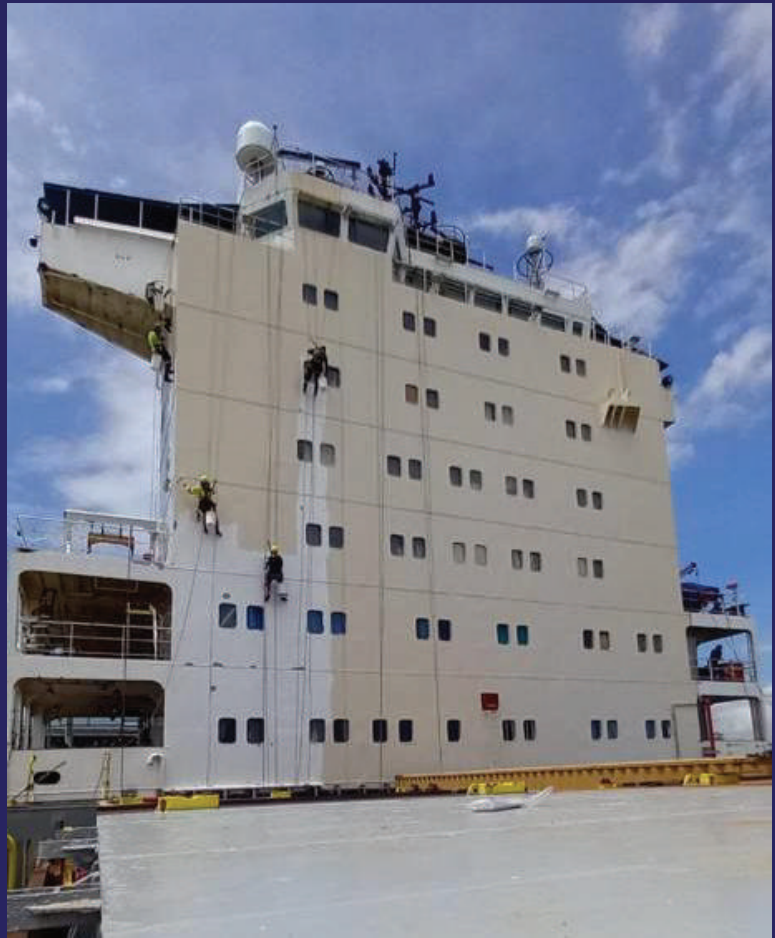
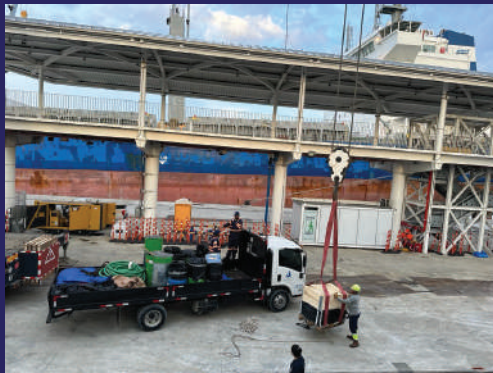
Our experienced team considers the specifications of the vessel or the platform and the access requirements that the scaffolding must provide.



STEEL REPAIRS

We, at Balam Marine Holdings, have a long history of successful completion of major steel repair works. Thanks to our global network, we are able to mobilize personnel quickly with all required documentation to undertake ship repairs at very short/strict programs and many miscellaneous works, which are supported by our local stations.

Our welding department is well-known for all kinds of steel repair: permanent or temporary structural steel repairs, steel workshop fabrications, hatch cover repairs, stevedore damages repairs, general steel replacement in topside tanks, double bottom tanks, cargo holds, decks, ballast water treatment system retrofits, anchor chain replacement, others.



MISCELLANEOUS SERVICES

- Trucking
- Shore crane rental
- FFE anual inspections
- UTI, pressure and temperature gauge calibrations
- Lagging material manufacture
- Marine refrigeration
- Rope access technique (painting, cleaning, etc.)

A long-exposure photograph of a city skyline at night, viewed from across a body of water. The sky is a deep blue with wispy clouds. The city lights are reflected on the water's surface. Several tall buildings are prominent, including a cluster of skyscrapers on the right side of the frame. The overall mood is serene and modern.

**QUALITY, HEALTH, SAFETY
AND ENVIRONMENT ABOVE ALL**

CONTACT US

Mobile: +507 6641-2858

Office: +507 383-1703

operations@balam-marine.com

service@balam-marine.com

Web: balam-marine.com