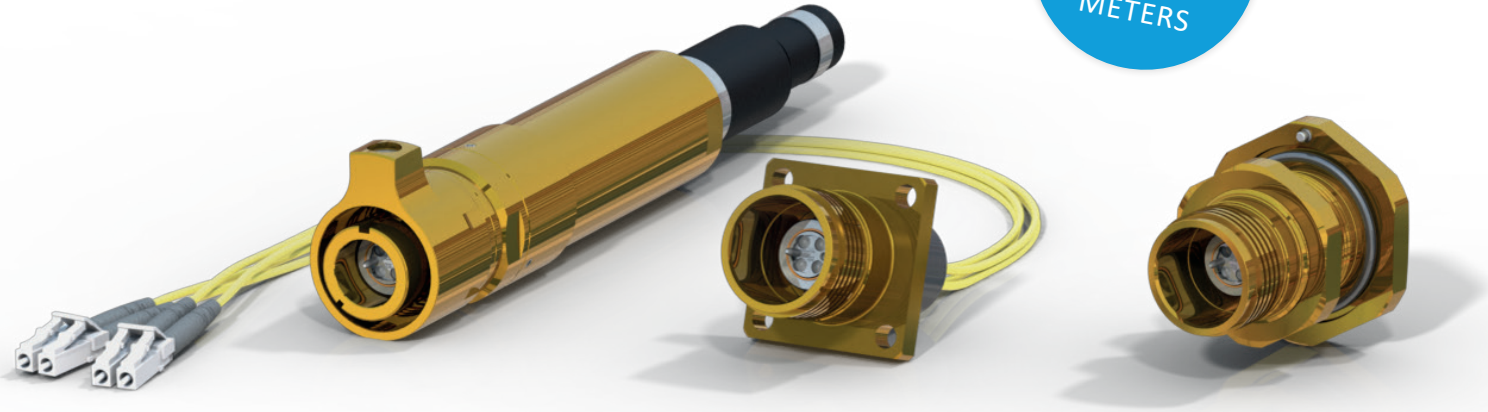


SUBSEA CONNECTORS & FIBER OPTIC CONNECTORS

# SERIES 8811FO EXPANDED BEAM

FOR UNDER WATER AND  
HARSH ENVIRONMENT APPLICATIONS

THE SERIES 8811FO COMBINES THE BENEFITS OF THE RUGGEDIZED CONNECTOR SERIES 8811 AND THE EASY TO CLEAN ADVANTAGES OF AN EXPANDED BEAM FIBER OPTIC INSERT IN A MOST COMPACT AND RUGGEDIZED HOUSING. OUR CONNECTOR IS VERY RESISTANT TO SHOCK AND ENVIRONMENTAL ISSUES. BECAUSE THE FIBER SYSTEM IS A NON-CONTACT, THE LIFE OF THE EXPANDED BEAM INSERT EXCESS OF 3000 MATING CYCLES.



WATERTIGHT  
DOWN TO  
1.000  
METERS

## EXAMPLES OF APPLICATIONS

- > DIFFERENT HEAVY DUTY INDUSTRIAL APPLICATIONS
- > OFFSHORE APPLICATIONS
- > R.O.V.
- > SHIPS, ON DECK APPLICATIONS
- > MARINE COMMUNICATION SYSTEMS
- > UNDERWATER COMMUNICATION SYSTEMS
- > APPLICATIONS IN THE OIL INDUSTRY
- > SUBMARINES

## ENVIRONMENT

OPERATING TEMPERATURE:	AMBIENT -30°C TO +70°C SUBSEA -4°C TO +40°C
OPERATING PRESSURE:	10 MPA (100 BAR)
TEST PRESSURE:	15 MPA (150 BAR)

## SPECIFICATIONS

INSERTION LOSS:	
SINGLEMODE:	0.75 - 2 dB, TYPICAL
MULTIMODE:	0.5 - 1.5 dB, TYPICAL
RETURN LOSS:	
	>30 dB @ 1310NM OR 1550NM



JOWO - SYSTEMTECHNIK AG | LANGE WAND 12 | 27753 DELMENHORST | GERMANY  
EMAIL: [INFO@JOWO.AG](mailto:INFO@JOWO.AG) | WEB: [WWW.JOWO.AG](http://WWW.JOWO.AG)



**START CONTACT**  
+49 4221 916 495-0

JUST TAKE YOUR SMART  
PHONE CAMERA

SUBSEA CONNECTORS & FIBER OPTIC CONNECTORS

# SERIES 8811FO EXPANDED BEAM

FOR UNDER WATER AND  
HARSH ENVIRONMENT APPLICATIONS

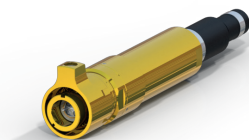
## CLASSES AND SHELL MATERIALS

THE SERIES 8811 EXPANDED BEAM IS AVAILABLE IN MARINEBRONZE.  
FOR OTHER MATERIALS CONSULT US.

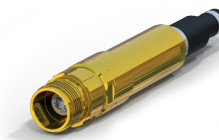
## MATERIALS

SHELL:	NICKEL ALUMINUM BRONZE CW307G
INSULATOR:	ARCAPAP1D
O-RINGS:	NBR
RUBBER BOOT:	NBR

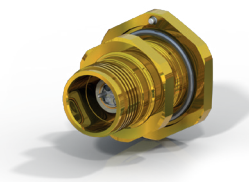
## CONNECTORS



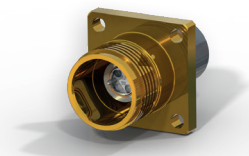
PLUG  
WITH BACKSHELL



INLINE RECEPTACLE  
WITH BACKSHELL



JAM-NUT RECEPTACLE



SQUARE FLANGE RECEPTACLE



## CERTIFIED

