



NASTESCO MARINE ENGINEERING

ShipServ TradeNet #252196

“Quality is our Responsibility”



Indian Register Quality Systems

IRQS CERTIFIED



WHAT WE DO

- ⚓ Specialize in all kinds of Main engines and Aux. engine maintenance works. (MAN B&W)
- ⚓ Specialized in engine trouble-shoot like starting issues or high temperature or high consumptions.
- ⚓ Specialize in Alpha lubricating service and spares supply.
- ⚓ Specialize in Main engine Pneumatic System service and spares supply.
- ⚓ Specialized for main engine special repair like damage fuel cam or exhaust cam replacement.
- ⚓ Specialize in all Dry Dock super vision jobs to provide high-skilled engineer and ex-marine superintendent to monitor full main engine job scope with maker's standard instructions.
- ⚓ 24/7 online support for main engine related issues and difficulties.
- ⚓ Supply all kinds of spares for main engine, turbocharger, purifier and automation, heat exchanger, purifier, governor and many more marine related items.
- ⚓ Calibration and repair of 15PPM, ODME, temperature controller, viscosity controller used and good working condition.
- ⚓ Trading with used items from ship breaking yard with guarantee supply material as per customer requirements within limited time-frame.
- ⚓ Effective - Affordable - Experience. This can benefit both sides and hence grow together in the long-term.



WHO WE ARE

ABOUT US

- ✚ Nastesco Marine Engineering Pvt Ltd was incorporated in April 2018, in Gujarat, India, which provides maker's standard quality work for marine diesel engines and power-plant, marine and offshore sector at international level. We specialize in MAN B&W and Wartsila diesel engine related work.
- ✚ Skilled and professional engineers, superintendent and technicians will perform technical issue in efficient way with minimum time and cost.

OUR POLICY

- ✚ Nastesco Marine believes in long-term relationship with the client.
- ✚ Good, strong and fast support which benefits both sides.
- ✚ Quality is our best policy mantra.

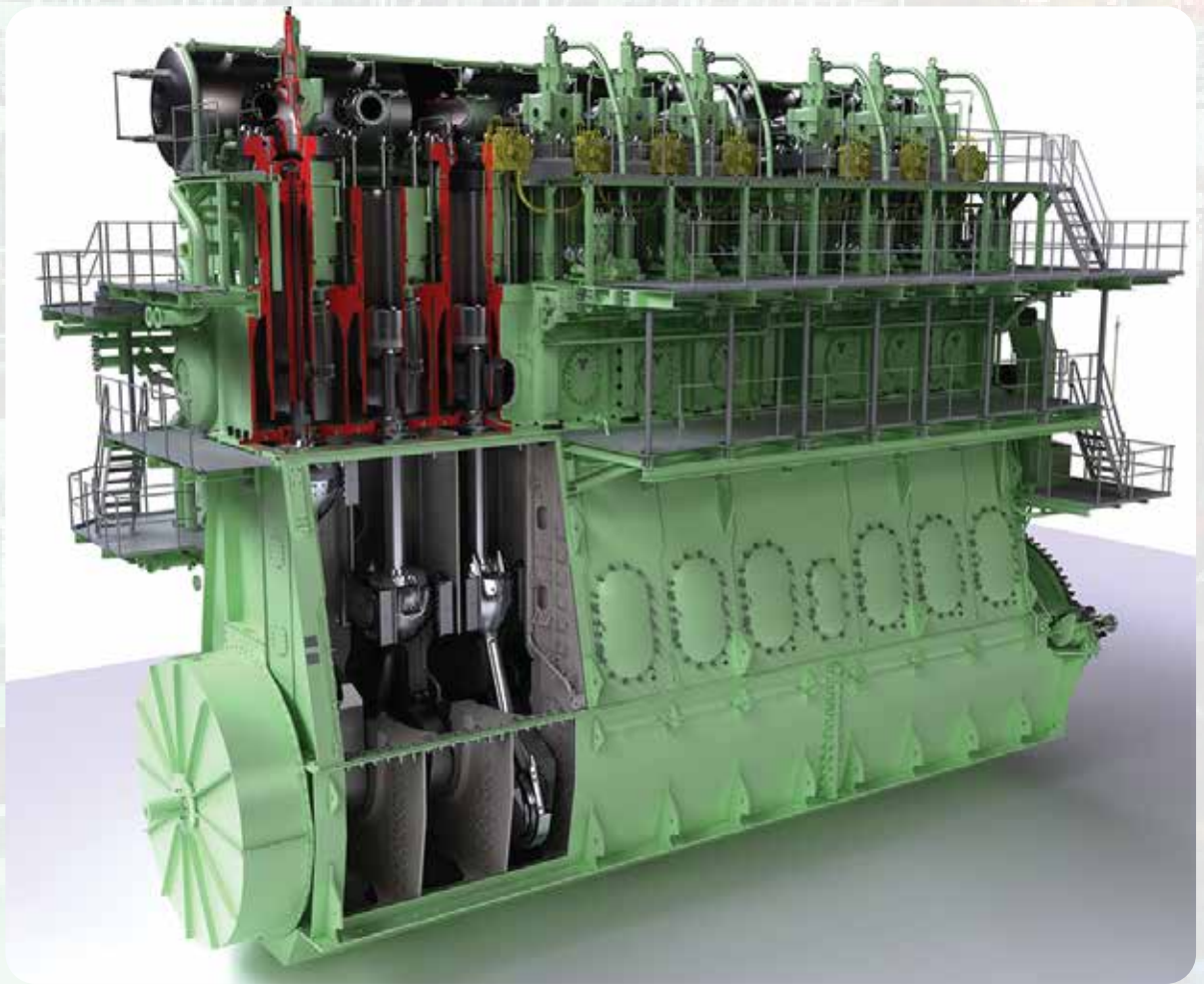
OUR BUSINESS







- ✚ We specialize in all kinds of work for Marine Diesel Engine, specially the MAN B&W and Wartsila Engines.
- ✚ Specialize in lubricating system for MC, MC-C and ME engine and spare supply.
- ✚ Specialize in Pneumatic System maintenance and spares supply.
- ✚ Special repairs like camshaft replacement, damage cam installation, main chain related work.
- ✚ Crank shaft replacement and timing adjustment for distributor, lubricator, fuel cam, exhaust cam.

OUR VALUE- ADDED SERVICES

- ✚ Trading in ships spares and equipments like Hydraulic pumps & motors, SW pumps, Heat exchanger and coolers, electronic items, Pneumatic valves, Compressors, Purifiers, seals, o-rings, coupling and tank gauging spares, float switch, Nakakita temperature controller, Rexroth items from Singapore, China, Korea, Japan and Dubai and India.

WHAT WE DO



-  Specialize in Main Engine and Aux. Engine related works
-  Total Solution for Alpha and Mechanical Lubricator
-  Main Engine Pneumatic Maneuvering System
-  Maintenance and Spares Supply
-  Trouble-shooting and Special Repair for Diesel Engine
-  Turbocharger and Spares Supply

MAIN/AUX ENGINE SPARE SUPPLY



MAN B&W:

L/S26MC, L/S35MC, L/S42MC, L/S50MC, L/S60MC, L/S70MC; L16/24, L23/30, L23/30H, L28/32, L32/40ETC.

SULZER:

RLB(A) 56/66/76/90, RTA38/48/52/58/62/68RTA62U, 6RTA48, 6RLA56, 5RTA58

DAIHATSU:

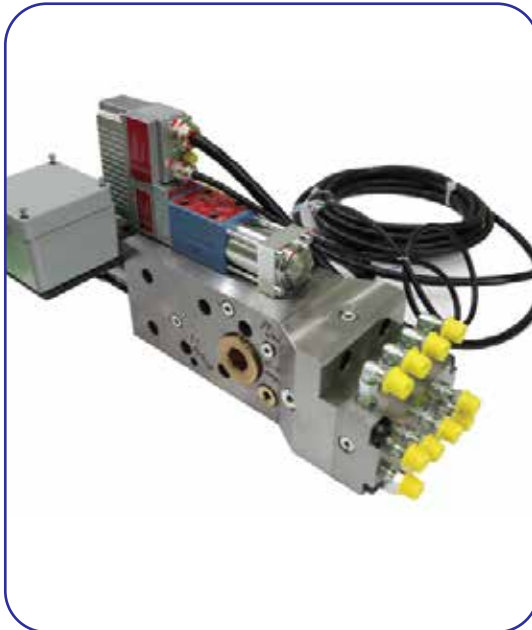
DK20/DK22/DK28/DS28/DS32/DL19/DL20/DL22/DL24/DL25/DL26 /DL28, 6PSHTC 30D, DC-17ETC.

YANMAR:

N18/N21/EY18/N330



LUBRICATING SYSTEM (ALPHA/MECHANICAL)



MARINE EQUIPMENT/ MACHINERY



TURBOCHARGER

ABB

MAN

IHI



MITSUBISHI



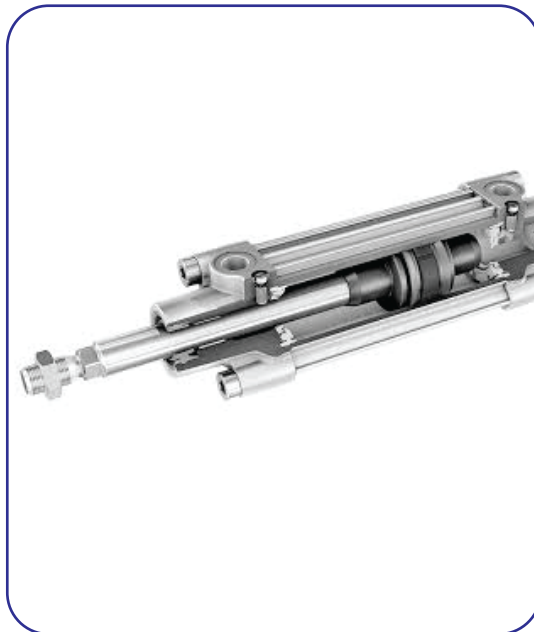
PNEUMATIC MANEUVERING SYSTEM FOR MAN B&W ENGINE

Rexroth
Bosch Group

AVENTICS

CAMOZZI
Automation

HAEWON



AIR COMPRESSOR PURIFIER & FRESH WATER GENERATOR

AIR COMPRESSOR SPARE PARTS

SPEER:

HL2/105 HL2/120 HL2/140 HL2/160 HV1/140 HV1/156 HV2/200 HV2/2
HV2/240 HV2/210

HATLAPA:

WP15L WP18L WP25L WP32L WP33L WP50L WP55 WP60 WP65 WP100
W110 WP120 WP135 WP140 WP150L WP185 WP200 WP220 WP240 W280
W330 WP400

TANABE:

HC-54A HC-64A HC-264(A) HC-64A HC-265A HC-277A LHC-277A H-64
H-64 H-73 H-74 H-273 H-274 H-373 H-374

HAMWORTHY:

2TF54

YANMAN:

SC10N SC12.5N SC20N SC30N SC40N

PURIFIER & FRESH WATER GENERATOR

A) Purifier

mitsubishi sj series:

Mitsubishi SJ2000 SJ3000 SJ4000 SJ10T SJ11T SJ12T SJ15T SJ16T etc

ALPHA LEVEL SERIES:

OSA20-02-066 MAPX204 MAPX207 MARX207 MAPX309 MOPX209
MOPX205 FOPX605

B) Fresh water generator – Plate heater exchange

ALPHA LEVEL GENERATOR SPARE PARTS:

JWSP-26-C100 JWP-26-250 JWP-26-C80B JWP-26-C100 D-PU-36-C100
PVF2040 MVF25 JW (S) P-26-C80 FCM2100SS JWP-26-C80/100
CNL-80-80/200 D-PU-36-CAS100 etc

PLATE HEATER EXCHANGER:

M10-MFM M15-MFM etc



PUMP COMPLETE AND SPARE PARTS

PUMP SPARE PARTS

TIANJIN PUMP:

TMC
TMC-32 TMC-80B TMC-125C
EHS
EHS-41A EHS-81D EHS-201C

ZHENHUAPUMP:

32CWL-4 50CWL-6 50CWL-5 CIS50-32-250 CIS65-40-315 CIS80-50-315
CIS100-65-315

SHUNDA PUMP:

150-CLH-13AG 250CLH-18BG 150-CLH-13AG 40CWZ-6CLVI 125-220B
80CWZI-6 CPJ100-125-125 150-CLH-13AG

OCEAN WATER PUMP:

JGGC8-10 CIS125-100-200B PVH/RG40-160B PVH/RG40-160B
GGC2-4-112/14

GUANGNING PUMP:

CLH40-32-2.5 200CWL-12 150CLZ-7/2 65CLLA-4A 80CWL1-8A 32CWL-3A
125C-30A

TIANTAISHAN PUMP:

2WXYH-6-10 50CPW-10-153 (20)/ (25) CWF-10 40WYXH-6-20
CYBW-6/(10)/(15)/(20)/(25)/(40)



 **sales@nmepl.com**

 **www.nmepl.com** |  **+91 85118 33756**

📍 22, Dwarkadhis Chamber, Opp. Kevadabaug, Vadodra, Gujarat, India