

Suryadipta Projects Private Limited

We do things differently

&

that makes the difference



Our Core Business

Process Equipments & Industrial Machineries

Heavy Engineering & Structures

Ship, Boats, Barges & Tug Building / conversion

Offshore equipments (bridge / bouyas / pile guide etc)

Fabrication of all Grades of Metals

(C.S / SS / AS / INCONEL / FRP ETC)





S.P.P.L has complete Engineering & Ship building Solutions for you under one roof.

We offer quality Engineering Products to International Standards & cost effective solutions for Engineering, Procurement and Construction of Mechanical Equipment's required for any process plant / projects and shipbuilding.

Amongst numerous market-leading equipment & ship manufacturers , S.P.P.L has a proven track record in engineering , S.P.P.L manufactured some of the most pioneering & Innovative Equipment solutions available in the industry.

Mission & Vision:

To Offer Complete Heavy Engineering & Fabrication Solutions under one roof to quality

Conscious Engineering Solution Providers who cater to, Engineering, Power, Infra, Mining, offshore & Shipping Industry.

Company & Managing Directors Profile

Founded by **Mr. S. Ghoshal** is a qualified engineer with a 20 year long tenure with India's finest engineering co : Larsen & Toubro. With a vast experience in engineering he founded Suryadipta Projects Pvt Ltd [SPPL] in 1996 at Retibunder ,Ghodbunder, Mira Road , adjacent to the Arabian Sea creek, for Heavy Engineering Solutions , offshore & Ship Building.

Director Projects & Planning :

Mr Deep Ghoshal Joined SPPL to assist His Father Mr S. Ghoshal

Mr Deep is a BE Mech & an MBA in marketing & HR.

He looks after the day-to-day production & planning managing both the fabrications sites of heavy engineering & Ship Building.

Othe Executive Directors :

1. Mr. S.N. Adhikari : Ex General manager of ONGC
2. Mr. J.T. Mahavar : Ex executive Director of ONGC
3. Mr. Bhusan Joshi : Ex ICICI / L&T / Bharat forge (ceo wind mill div)



Infrastructure

Banking & Financial Capabilities : We are banking with India's Top rated scheduled banks with adequate : C/C, L/C/ , B.G , Bills Discounting & Export Finance facilities , We have adequate banking facilities for execution of top end projects.

Manufacturing Facilities -: Process Equipment / Heavy Fabrication & Shipbuilding

Location: 23 km from Mumbai International Airport / 5 km from Dahishar Checkpost, Mumbai / 1.5 km from Mumbai Ahmedabad Western Express Highway.

Floor Shop Areas Unit 1 : For Industrial Products :

50,000 SQFT yard, with concrete JETTY having draft of 4.5 mtrs, A 10,000 SQFT covered fabrication & machine shop . Yard is suitable to anchor barges for transportation of oversized equipment's.

Ship building Yard Unit 2 :

400 mtrs from our main office & unit 1 an 50000 SQFT open yard with slip way and adequate bollards for Anchoring ships for repairs & Conversion.



Upcoming Facility Unit 3 : For Offshore & Ship Anchorage

On an 10 acre Plot under development about 55 kms from the present location, with water-front & Direct access to the Arabian Sea creek having draft of 6 mtrs

Core Businesses

Ship Building , Repairs & Conversion

Range of Products - : We offer all listed products on turnkey basis from concept design to delivery, including Design & detailing of mid size Ships, Tugs, Barges, Crew Boats, Crafts, cargo & Supply Vessels Speedboats, Barges [dumb & Self Propelled], Jack-up Barge [Self Elevated platform], Submersible barge / bridge, Tugs, OSV, Mooring Equipment, Buoy's, Cassion Gates.



**Aquator Crew Boat built by S.P.L under IRS class ,capacity 30 pax + 6 crew.
Area of operation - 200 nautical miles from shore , complied under SPS code.
(1 st time built in India)**

Ships Allied Equipments -: Manufacturing of stern tube, propeller shaft, rudderstock , cement tanks for carriers, Davit foundations , bulk carrier hatches & Piping & Machinery Alignment services. all testing are carried out as per surveyors satisfaction.



**Fuel oil Carrier – 650 KI For Tristar [Dubai].
Built under ABS class**



**Offshore Supply Vessel – 10 mtr x42 mtr +12 crew
built under RINA class**

Ship Repairs & Ship Conversion

Repairs & Conversion:-

We have capability to undertake repairs of Tugs, supply vessels ,Buoys , barges , medium size bulk carrier , reconditioning of accommodation , Electrical re-wiring and re-routing etc.

We have expertise in steel renewal as well as on maintenance & overhauling of machineries, crane overhauling , F.W/ S.W pumps,winches,capstan,grab buckets, steering system / rudder & stern tube re-alignment, generator overhauling , engine overhauling , gear box servicing.

We have dedicated in house workshop for machining, re-fit and repairs of machineries.

Jackup Barge Construction



Modular Jack-up Barge made Under IRS Class.
Size : 18 mtr x 18 mtr / 36 mtr Spud length

Unique Features – the Jack-up can be assembled in 7 different configurations. Moon pool at the center can be configured as per usage requirement. Spud pipes had been bolted AND THE interlocking arrangement for joining at site are made of Alloy steel.

Range of Jack-up :- Jack-up for Survey , Pilling , Heavy loading capacity , offshore service platforms , wind farm operator type, Rigid Hull type & Modular offshore Drilling unit .

Special Coatings :- We now offer Jackup barges painted with Special Corrosion Control Paints & Anti Fouling systems , U.V Stabilized, which last 5-6 yrs hence longer life of expensive barges ,saves mantainence & dry docking time losses , which is advised in conventional coating systems every 2-3 years. Our special coatings are Guaranteed for 5-6 years but last much longer.

Oil & Gas , Petrochemical Project Supplies

Installation Reel:

S.P.P.L has fabricated an Extra Large Size Pipe Spool [8.5 mtr Dia] to store, carry and install subsea pipes & cables. SPPL has built & transported directly from its Yard's Jetty through a barge into high seas for final loading on Vessel and Shipped to USA.



Cable REEL shipped on Barge from our Jetty to Mumbai Port for Shipment to USA
Equipment Spec -: 8.5 Mtr dia x 6.5 Mtr. Wide & 40 MT weight of each .
Raw Material used A-572 gr-70 , Load Tested and certified by DNV class.



Lifting of Cable reels onto barge



Modular Reformer body for L&T

Offshore Equipment

Sledge & Pull Head assembly : This was built to pull 24 inch dia pipes for Laying pipes from Onshore to Offshore . Raw Material API 5L Gr B / S-355 J2 G3/
total weight of entire set 45 MT



Manufactured for - M/s. Leighton Welspun. [Cairn Energy project Gujrat]

We have supplied various Pipe laying equipment's required for offshore pipe line installation for ONGC PRP-1 , PRP-2 projects

Range of Products -: Pig launcher , Pig Receiver, Riser Clamps , buoyancy tanks , bend stiffener connectors , Bear clamp , walk way, Buckle Detector , Multi purpose Skid mounted units & and many more items ,Pile Chaser . Skid mounted high pressure pump(for chemical/water injection/fire fighting) supplied to oil India Assam through L&T.



Skid Mounted Water Injection Pump for OIL India / L&T
Spec:- Caterpillar engine coupled with gear box ,Flywheel & suitable Pump

Process Equipments



Cement Plant Equipments

Coolax Grate Cooler: Manufactured & supplied to Lafarge Cement Bangladesh. The grate cooler was designed by FLSmidth Denmark [leaders in cement plant consultancy] and project supplied by L&T. Unique feature-: The Cooler feeding clinker having temperature of 1380°C which is cooled up to 65°C within 30 Mtr travel. Internal area of the equipment were machined at assembled position



*Shipment of Clinker Cooler from our Heavy Engg. Yard : Size 30 mtr x 4.5 mtr x 4 mtr
Weight : 120 MT*

Range of Products -: Klin Shell , Clinker Cooler, Preheater, Air Separator, Silo Cone Stacker, Reclaimer & PN gates , Fan Rotor, Screw Conveyor , Pneumatic seal , Impact Arm , Roller Hub, Rotary Valve , Air Sluice , Atox mill body , Mill base ,OK Mill body , Louver Dampener 's , Insulated tanks Etc.



Dynamic Balancing of Blower Impellor



Air separator erected at unit 1

STEEL PLANT EQUIPMENT

Pickling Tank: A fabricated rectangular long tank with provision of multiple roller assembly.

The tank is rubber lined than lined with granite to save the tank from highly corrosive acid required for pickling process.

Continuous paint plant: The thin shell de-coiled from one end passes through pickling process enters to the oven where it is dried than painted in painting booth and strip passes through the oven which blows hot air to dry the paint, sheet at other end rolled to make coil form.

The process includes hot air generator (incinerator) duct, etc.

SPPL manufactured complete plant in modular form, pre assembled at factory dismantled & exported to Mexico .



Range of Equipments: Moving sleeve, acid cleaning tank, service roller, rinse tank, pickling tank, rinse recirculation tank, rinse spray tank, prewash tank, bridle roller assembly , tension leveler, coil saddle, slide cover, continuous paint plant (incl. incinerator, duct, oven, chimney in additional to above few pre-process tanks). Rubber lined tanks Etc



Construction Equipment

Pile Guide Frame : Built for India's largest Jack up Barge "Samrat" Owned by M/S Afcons infrastructure it is hydraulically driven in X-Y Direction to guide & position vertical as well a racker pile
Each guide weighs 100 Tons Size : 3.4 mtr x 5.5 mtr x 12 mtr. It is manufactured, transported, erected & commissioned by us at DAHEJ Site. [Pic of Pile Guide on Cover Page]

Loading Installation:

The pride of Mumbai "The Bandra Worli Sea Link" [BWSL now Rajiv Gandhi Setu]

We Suraydipta projects are proud to fabricate the two main Mammoth sized gantry cranes of 1200 MT capacity & related Towers [designed & quality assured by "VSL Singapore Pte Ltd.", which is Hercules in building the approach bridge up to the Cable Stay Bridge.



Range of Equipment's : Tower crane structure , Crane body / strucutre Crane base / foundation , single girder gantry, double girder gantry, A-Frame, Pile out board frame, subsea piling tools, Pile upending system, Stab frame,equipment's combining Hydraulics and mechanical operation as well as Excavator Boom, Grab buckets, Pile Chaser ,



Gantry girder of 50 ton capacity manufactured for City Cement Saudi Arabia.

Size -: 16 mtr long x1.2 mtr H.T

Material -: A-572 Gr -70 steel

Inspected by -: Tata projects ltd

Structural Fabrication



11

We are pioneers in fabrication of most complicated & Heavy structures for various industries.

Our structures are present in many industries, few of them are for IOCL, BPCL, NPCIL, GAIL, Forges Tardieu Mauritius, City Cement Saudi Arab and many other foreign clients

Range of Products -: Cement plant building, steel plant buildings, structural shed, Pre-engineered buildings, hollow pipe structures, structural gate, chimney supports, ACC conveyor supports, supports for handling system, fabricated beams, Pipe racks, walkways, over-Hang structure's, Etc



City cement (Saudi Arab) Building built by Sppl



**1.5 KM Long Pipe rack at Vashi bridge for GAIL
[Project:- Dhaej-Uran gas pipeline]
Manufactured, transported and erected at site
including core drilling on concrete**



**Cement plant building
structure total 600 M.T.
Including platforms, columns
and stairs.**

**Scope:- Detail designing,
Procurement, fabrication,
Assembly, dismantle, match
mark & dispatch
Mat Spec - : U.B, U.C, UPC
C.H.S, H.E.A, H.E.B etc.**

**Building size -:
24 mtr x 12 mtr x 60 mtr H.T**

Food Processing Equipments

S.P.P.L's manufactured equipment processes 40 types of raw materials, of which soybeans, sunflower seed, rapeseed, groundnuts, cottonseed and palm oil, are most popular.

In the past 15 yrs we have supplied small and large plants to most of the parts in India , as well in SAARC region . Our products are proven and are being used in wide environmental conditions.



Desolventizer Toaster -: 4 mtr dia x 12 mtr 8 stage Exported to Russia

Range of products -: De-solventizer Toaster, Dryer Cooler, Extractor, Oil Refining Equipments, deodorizer, Tube condenser , agitator ,Heat recovery unit ,Contionous bleacher, low pressure D.T , Cooker , De-arator , Zero effluent discharge system and other solvent extraction plant equipment's



Major Equipment Manufactured by us : Extractor Size : 4.5x2.4 x 30

It is used in Solvent extraction plant , it's in modular form with flanged ends for transportation

Tanks & Coded Vessels

Range of Products -: Compressed Air Storage duplex vertical Tank , under ground Petroleum storage tank , Condensate separator tanks, vessels manufactured for Cement , Chemical & power plants from various materials Viz : IS 2062 , A 516 Gr 70 , A 387 Gr P II ,

Capability -: Manufacturing standards conforming to ASME Sec VIII, having precise time bound planning ,Quality welding Procedure and various in house tank testing facility enables us to deliver Superior quality of most complex designed vessels within stipulated time .

Duplex tank of 100 KL capacity 2 nos

Client-: Total Oil Lube Ltd

4 mtr dia x 12 mtr Lg

Scope -:

Manufacturing , Hydro testing ,
transportation, erection at site ,
handrails and ladder assembly .



DT for Client -: Noble [Russia]

Spec-: 4.5 mtr dia x 12.5 mtr Lg

Made from stainless steel SS.304 &
A516 gr-70 , sail hard .

It has 8 stages of double bottom
which are hydro tested at 25 kg/cm²
It has suitable shaft, blades and
bearing assembly which are aligned
at our yard

Process Tank

Spec -:

Stainless steel tank –SS-316

2.5mtr dia x mtr long

Duly fabricated as per ASME code



Special Projects



We are capable of manufacturing various custom built Equipment's & Pilot Projects for different industries as per clients requirement in Turnkey basis .

It includes Detail design ,Procurement, fabrication , assembly ,piping , Insulation of diff grades, Rubber lining, F.R.P lining , Trial run at our yard & dispatch. We have supplied Silica beneficiary plant to Ethiopia producing 99 % pure silica .

PVC Lined tank

Manufacturing & testing,
piping installation & trial run
for process confirmation



Catalyst Cage

one of the largest sized cage
of size 2.4 mtr dia x 30 mtr
Lg. Built for PETRONAS &
Exported to Malaysia thru
M/s L&T

Stack Chimney & ducts:

Built up to 60 mtr
height self-supported
chimney supported to
D20 up-gradation of
NCPI L Tapp 3 & 4.
Stack's also supplied to
BPCL & some steel
plants.



Ducts

Fabricated ,
assembled ,
insulated and
dispatched

Other Miscellaneous Project Supplies

Range of products -: Thermal Plant , Tetrapod Molds , Buoys, Floating Marinas ,Galvanized Handrails, platform gratings, Stairs , Pipe structure for amusement parks, any other custom fabrication as per Clients design

Heavy Duty Gratings



For wagon Tippers , coal handling , trench covers for heavy equipment movement



Our New Division : Light Fabrication

Recently Launched to offer single point solution to our customers, we now offer. Gratings : Manual Welded Heavy Duty & light Duty fabricated , an perfect alternate where Electro forging is not feasible. For application in : Coal Industry [wagon tippler, track hopper] , Power Industry Cranes & Heavy Vehicles & Aircraft Movement.

We have manufactured single PC 3 x 3 mtr weight 2.75 MT
From Flats size : 200 mm width x 25 mm thick



Technical Capabilities

We have a complete range of precision metal fabrication capabilities to bring your design to life while adding value, timeliness and overall cost-savings to your project.

Our specialties include engineering, design ,fabrication & supply on turnkey basis to various industries and Marine field

Types of Materials we can fabricate :

We have worked with special metals & have an experienced & qualified Work team with required qualification for precision welding jobs.

We work with all kinds of metals Viz : Mild Steel , Stainless Steel , Alloys , Inconel, Monel ,High tensile steel , molybdenum , Aluminum EN series material , Manufacturing Pipes , beams & columns Etc.

Standards :

We have a dedicated procurement department headed by an well experienced manager to source all our material requirements.

We have records & procedures for all in coming materials which are purchased with perfect test reports from NABAL 17001 certified labs.

We procure Raw Materials confirming to Indian as well as international Standards & maintain manufacturing standards Such as : ASTM , ASME, BS, DIN , JIS , EN & GOST

Inspection Agencies :

Our Ships & boats are built under IRS & RINA stringent inspection parameters under SPS class , to our credit is an crew boat for end user ONGC built for the 1st time in India, inspection by IRS.

We have supplied material for projects within India & for export under strict Inspection of 3rd party agencies Viz : BV, TUV, RINA, IRS ,GIL ,LRIS , ABS , DNV, UHDE & other agencies

Our company has requisite WPS & PQR qualified welders in our team of workmen.

Machinery & Equipment List

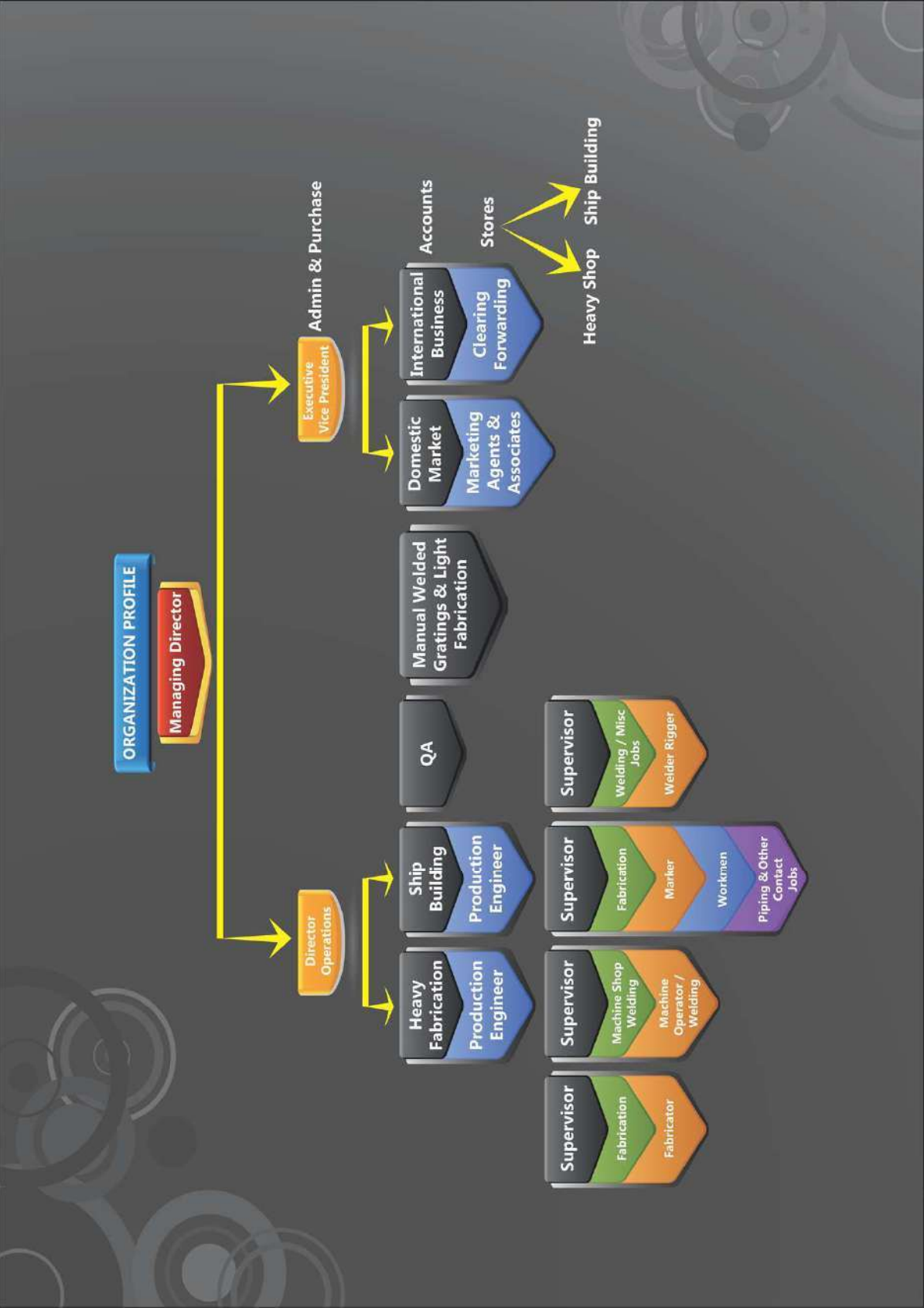
17

Machinery	Qty
Rectifier	25
inverter	04
Argon Set	02
Co2 welding	05
Submerged Arc Welding	01
Plate Bending Machine 36 THK x 2500 wide	02
Hydraulic Press 450 MT Capacity	02
Radial Drill 2" Capacity	01
Core Drill Machine	04
Gang Drilling Machine	01
Magnet Drill	03
Lathe Machine [6, 4 1/2 Ft]	01 + 01
Shaping Machine [24" , 30"]	01 + 01
Hacksaw Machine	01
Grinders	20
Pug Cutters	03
Tools	02 + 06
Electrode Baking + Portable Oven	01 + 08
Heating Burners	04
Tank Rotator + Idler	05 sets
Gantry 10 MT	01 Set
Chain Pulley [Diff Capacity]	04
Calibrated Instruments	01
Boring Machine Spindle	01
Core Drill Automatic 65 Dia x 50 Thk	06
Hydra Crane 11 MT & 14 Ton	01 each
Welding Transformer	03
Power Pack Hydraulic Jack 400 Ton	01
Air Blower	04
Instruments	
Out Side Micrometer Mitutoya 0-25, 0-100,0-150,150- 300, 300-400, 400- 500	01 each
Inside Micrometer Mitutoya 0 – 1000 mm	01 each
Bore Gauge , Mitutoya 18- 34 , 35 – 60 , 60- 120 mm	01 each
Height Gauge Mitutoya 0- 300 mm	01 each
Dial Vernier Mitutoya 0-200 mm	01 each
Vernier Caliper Mitutoya 0- 300 , 0- 600 , 0 -1000 mm	01 each
Combination Set Mitutoya	
Paint DFT Meter	01 each
Sand Blasting DFT Meter	01 each
Hydro Test Machine	01 each
Hydo test pump	01 each

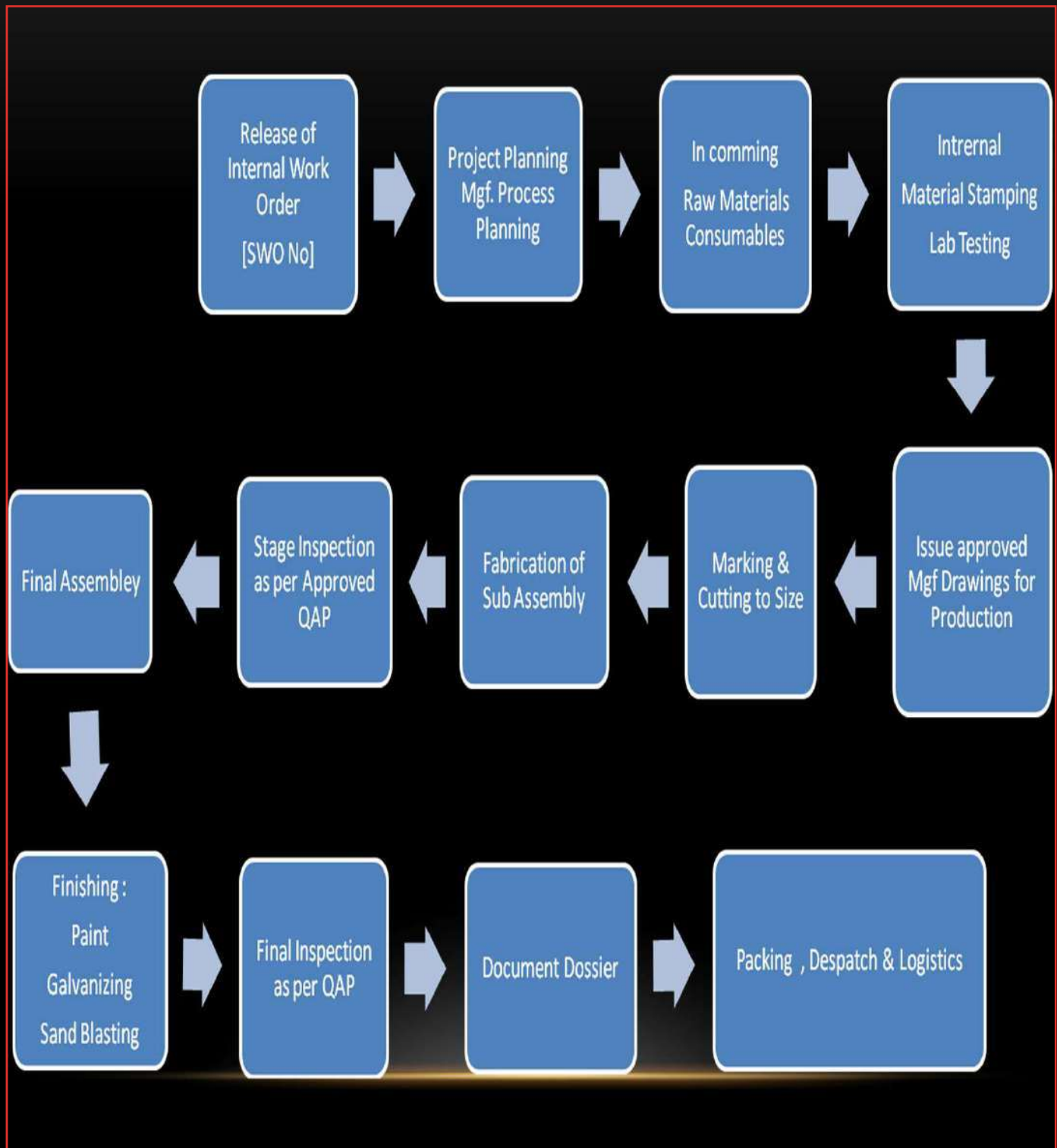


Major Projects completed by SPPL

		Major Projects Executed Heavy Engineering		
Product	Customer	Inspection Agency	End User	Approx Wt MT / Nos
Radiant Heater	L&T	EIL	BPCL	450 Tons
Bridge Installation	HCC	TUV	MSRDC	800 Tons
Process Equipment	L & T	L & T	Reliance BPCL/IOCL/CFCL	300 Tons
Structural 's	L&T	DNV	IOCL	150 Tons
Ext. Platform	Supreme offshore	EIL	ONGC	100 Tons
Pickling Line	FLAT	FLAT	Various Customers	8 x 40 Tons
Continuous Paint Plant	FLAT	FLAT	Protarsa USA	100 Tons
Structural's & Chimney	NICCO	NPCIL	NPCIL	230 Tons
Sugar Plant Structural	Citadel	F.T Mauritius	Forges tardieu	150 Tons
OK MILL Body	L&T	L&T	L&T	150 Tons
Coolax Cooler	L&T	TPL	LAFARGE	120 Tons
Air Separator	L&T	TPL	LAFARGE	20 Tons
Spool Reel drum sides for Flexible pipes	Deep Sea	DNV	Oceaneering Tech USA	2 x 40' containers
Installation Aid BOUY 'S	Leighton	ONGC	IOCL, MRPL	300 Tons
Bridge loading Installation	HCC	MMRDA { BWSL }	HCC	
Pile Guide	Afcons			100 Tons
Heavy Gratings	Omkareshwar Engineering	GMR Infra	GMR Infra	125 Tons
GEA Cooling	Condensate Tanks	OPG Power	GEA Cooling	6 nos
GEA Cooling	Ducts	OPG Power	GEA Cooling	180 Tons
GEA Cooling	Dish Ends	OPG Power	GEA Cooling	5 mtr x 5 mtr
Energo engineering	Ash Vessels		Energo	18 nos
Indana	coupling station	BASF	Toyo engg	8 stations
		Ship Building		
		MDL/WOT	Ship Units P-17	MDL
Jack Up Barge	Renuka	IRS	Renuka	200 tons
OPSV tug 2nos	Virgo	IRS,RINA	AL AHMEDI	600 Tons
Ship building	Mech Marine	ABS,IRS,RINA	Shell	800 Tons
high Speed Crew Boats	SDS Offshore	SPS Class	ONGC	36 Pax + Crew
Hydrography Boats	Mah. Maritime board	IRS	M.M.B	3 nos



Mgf Process flow chart



Contact Information

21

Suryadipta Projects Pvt Ltd.



Heavy Engineering, General fabrication, Ship Building.

Fabrication Yard 1 & H.O
Kherani Compund ,
Retibunder , Ghoubunder Village ,
Mira Road [E] , Thane - 401107 INDIA

Ship Building Yard 2
Famous Compund , Retibunder,
Ghoubunder Village Mira Road [E]
Then 401017 INDIA

Telephone , Mail & Mobile :
Telephone: +91 7718887906

Emails : marketing@fabricationindia.com
ghoshal@suryadipta.com
Web: www.fabricationindia.com

Mobile :

Mr. S Ghoshal Managing Director : + 91 9870094173
Mr. Deep Ghoshal Director Projects Planning : + 91 9870000475



Production facility of Fabrication Yard

Yard -1 -: 4,000 Sq mtr , Yard -2 -: 10,500 Sq mtr
--

1. Yard Facilities

- a) Steel Stockyard -: stock area is defined in open yard.
- b) Blasting & priming shop -: A temporary shed is made close to stock yard and all the raw materials blasted and primed.
- c) Equipment Store -: 40 ft close Container kept for Regular used items. 2 nos 40 ft close container kept for project items
- d) Hull production & Assly shop -: All types Production related to Hull & assemblies are done in open yard.
- e) Pipe production Shop -: Pre-fabrication of Pipelines are done in closed shop
- f) Pre outfitting Shop -: Specific closed shop is available for fabrication of Outfit items
- g) Paint store & paint shop -: Separate paint store is available at yard. Painting of Loose items are done in Blasting shop .For Hull & major items Blasting & Painting is done at open yard Quality control done by fixing time looking at Humidity & weather temperature.
- h) Electric Shop -: Closed area is provided for electrical assembly and fitments.
- i) Carpentry shop & mock up manufacturing -: separate shed is provided to carpentry contractor.
- j) Slip way -: Slipway size -: 1] 70 mtr x 16 mtr – 1 nos [2] 50 mtr x 16 mtr – 1 nos , Compact stone slipway of size -: 50 mtr x 16 mtr -: 2 nos . Rail & Trolley arrangement made for Launching as & when Required
- k) Outfitting Jetty -: a Jetty of size 50 mtr length is available for outfitting of equipment's in afloat condition.

2. Shop Floor Areas

	Shop Floor Area	Covered area	Open Yard
A	Steel stockyard	x	4000 sq ft
B	Blasting & priming	1000 Sq ft [temporary]	
	Equipment store	1200 sq ft	1000 sq ft
C	Hull production	Project to project decided fab area/assembly area.	Total – 50,000 Sq ft
D	Pipe Production Shop	2000 sq ft x 2nos	x
E	Galvanizing	Sub-contractor	x
F	Machine shop	3000 sq ft	x
G	Pre outfit shop	2000 sq ft x 2 nos	x
H	Paint Store	200 sq ft	x
I	Electrical shop	500 sq ft	x

3. Cold & Hot forming & Cutting

- a) Capacity of Plate forming machine up to 36mm thk.
- b) Maximum Thickness for cutting – 200mm
- c) Forming - 36 mm thk x 2 mtr wide or 50 thk x 1 mtr wide

4. Lifting capacity of crane & Horizontal transport

- a) Inside Shop for Sub assembly -: 5T EOT, 11 Ton Hydra & 15 Ton Hydra available which can be used for lifting & horizontal movement up to 15 Ton material / unit. Beyond that up to 300 Ton crane available locally on hire.
- b) Open Area – For Horizontal movement of blocks , Trailors of various capacity available wherein material loaded by cranes on the trailer are shifted from block fabrication area to Erection Berth

5. Largest block that can be handled

- Up to 80 T by hire crane
- Up to 15 T by own Crane

6. Launching & Berthing

- a) Largest vessel launched -: 8 mtr x 40 mtr -250 Ton [Crane Dredger]
- (b) Type of Launching -: Rail & Trolley (Conventional type)
- (c) Depth of water & Tide -: Depth – 4.5 mtr , Tide variation – varies in every 15 days
- (d) TUG Availability- up to 20 bollards Pull on hire & a winch available of capacity 500 T.
- (e) Launching calculation -: Calculation done by Stationed Designer & Consultant.

7. Power supply

- (a)100 kw X 3 Meters
- (b) Captive power – N.A.

8. Control of sub contracted work

Standard QAP prepared as per type of sub-contracted job and accordingly followed for Quality control.

9. Quality of Raw Material

All Raw materials are bought thru approved Vendors; Depending upon vendor's performance quantity of raw material to be purchased is decided.

After receipt of raw material each material is verified and cross checked with its material test certificate.

After confirmation with MTC , material is identified with unique identification number , Test samples of each lot are sent to Accredited LAB for Physical & Chemical check , upon final confirmation of material & approved by Lab , Raw material is taken for production process with each plate identified with LOT no .

10. Welding & Bonding

- i) WPS – Available for major types of materials.
- ii) WQTC – Available for all Welders certified by IRS / DNV / LR etc.
- iii) Welding Manual – Inspection followed as per WPS.
- iv) Machine Calibration -: Annual maintenance record book maintained. Re-calibration done as per respective due date of machines
- v) NDT procedure – Avl for all NDT activities if required job wise NDT process made by Level II NDT person.
- vi) Correction method for defects – ASME & IACS process followed
- vii) Advance Technique- SMAW – Avl.



SURYADIPTA PROJECTS PVT. LTD.

PROCESS EQUIPMENTS, HEAVY ENGINEERING & SHIPBUILDING



SR NO	MACHINERY	SIZE	QTY	MAKE
1	Rectifier & Inverter	400 AMP	40	memco/time weld
2	Argon Set	300 AMP	2	time weld
3	Co2 Welding with Inverter	400 AMP	8	perfect
4	Welding Transformer	300Amp	3	time weld
5	Submerged Arc Welding	1200 AMP	1	memco
6	Plate Bending Machine	2500 WIDEX36 THK	1	
7	Plate Bending Machine	1200X6 THK	1	
8	Hydraulic Press	450 MT	2	Godrej
9	Pug Cutters	upto 150 thk	5	sardar
10	Hand cutting set	upto 150 thk	15	different
11	fitter tools set	VARIOUS ITEMS	20	different
12	Electrode Baking + Portable Oven		01+08	different
13	Heating Burners		4	different
14	Tank Rotator 1+ Idler 3		5 sets	
15	Hydra Crane	15 MT	1	JCB
16	Hydra Crane	11 MT	1	ACE
17	Gantry Hot+ Eot	5 mt	1+1	
18	Power Pack Hydraulic Jack	100 ton x4 cyl	1	hydro power
19	Chain Pulley	1 ton to 5 ton	4	
20	Radial Drill	50 MM DIA	1	Rolex
21	Radial Drill	40 MM DIA	1	Rolex
22	Radial Drill	12 MM DIA	1	Rolex
23	Core Drill	48 DIA	4	ATRA & NITTO
24	Gang Drill	12 DIA	1SET	
25	Magnet drill	40 MM DIA	3	WOULF
26	Lathe Machine	6FT AND 4.5 FT	01+1	PSG
27	Shaping Machine	24 INCH AND 30 INCH	1+1	Rolex
28	Hacksaw Machine	300 STROK	1	
29	Grinders	9/7/5/4 INCH	20	VARIOUS
30	Bench grinder		2	
31	Boring Machine Spindle	100mm spindle	1	ALFA
32	Air Blower		4	
33	Diesel Air compressor	10 kg/cm2	1	ATLAS COPCO
34	Sand blasting equipments		1	
35	spray painting equipments		2	

FACT. : Kherani Compound, Retibunder, Ghodbunder Village, Mira Road (E) - 401 107. Office Ph. 73188 87906
 • E-mail : ghoshal@suryadipta.com • Website : www.suryadipta.com / www.fabricationindia.com

SPPL Pg-2

36	Electric Air compressure	7 kg/cm2	2	
	Calibrated Instruments			
37	Measuring tape		1	FREMANS
38	Outside Micrometer Mitutoya	0-25,0-100,0-150,150-300,300-400,400-500	1	Mitutuoya
39	Inside Micrometer Mitutoya	0-1000	1	Mitutuoya
40	Bore Guage , Mitutuoya	18-34,35-60,60-120 mm	1	Mitutuoya
41	Height Guage Mitutuoya	0-300 mm	1	Mitutuoya
42	Dial Vernier Mitutuoya	0-200 mm	1	Mitutuoya
43	Vernier Caliper Mitutuoya	0-300,0-600,0-1000 mm	1	Mitutuoya
44	Combination set Mitutuoya		1	Mitutuoya
45	Paint DFT Meter	digital and magnetic	1	
46	Pnumatic test machine & gauges		1 set	
47	Hydro Test Pump & Gauges		1set	



For Suryadipta Projects Pvt Ltd

S. Ghoshal

S.GHOSHAL.
director

Suryadipta Projects Private Limited

We do not do different things
we do things differently



Our Core Business

*Heavy Engineering & Offshore Fabrication
Ship Building & Ship Repair's*

Heavy Engineering & Offshore Fabrication

Heavy Engineering Products

- Tower crane structure
- Excavator body
- Crane body / Crane base
- Single & Double girder gantry
- A-Frame
- Pile out board frame
- subsea piling tools
- Pile upending system
- Stab frame

Also equipment's combining Hydraulics and mechanical operation.

Offshore Products

- Multipurpose Skid mounted units.
- Pig launcher
- Pig Receiver
- Riser Clamps
- Buoyancy tanks
- BUOY'S
- Quick Pipe connectors
- Bear clamp
- Walk way
- Buckle Detector
- Pile Chaser .
- Skid mounted high pressure pump



Steel Reel for Offshore installation

S.P.P.L Fabricated an Extra Large Size Pipe Spool 8.5 mtr Dia to store, carry and install subsea pipes & cables. It has been built & transported directly from our Yard's Jetty through a barge into high seas for final loading on Vessel and Shipped to USA..

Equipment Spec :- 8.5 Mtr dia x 6.5 Mtr. Wide & 40 MT weight of each . Raw Material used A-572 gr-70 , Load Tested and certified by DNV class.



Loading Installation For Bandra worli Sea link

The pride of Mumbai "The Bandra Worli Sea Link" [BWSL now Rajiv Gandhi Setu]

We Suryadipta projects {S.P.P.L } are proud to fabricate the two main Mammoth sized gantry cranes of 1200 MT capacity & related Towers [designed & quality assured by "VSL Singapore Pte Ltd.", which is Hercules in building the approach bridge up to the Cable Stay Bridge.

Infrastructure & Manufacturing Facilities :-

Heavy engineering Yard :-
50,000 SQFT yards, with concrete JETTY having draft of 4.5 mtrs, 10,000 SQFT covered Fabrication & Machine shop. Yard is suitable to anchor barges for transportation of oversized equipment's.



Ship building Yard Unit 2. :

50000 SQFT open yard with slip way and adequate bollards for Anchoring ships for repairs & Conversion.

Offshore Yard & Ship Anchorage Facility Unit 3 :-

On an 10 acre Plot under development about 55 kms from the present location, with water-front & Direct access to the Arabian Sea creek having draft of 6 mtrs

Ship Building & Ship Repair's

Range of Jack-up :-

- Jack-up for Survey
- Pilling
- Heavy loading capacity
- offshore service platforms ,
- wind farm operator type,
- Rigid Hull type
- Modular offshore Drilling unit

Range of Ship :-

- Tugs
- Barges
- Crew Boats ,
- Cargo ship
- Supply Vessels
- Speedboats ,
- Barges [dumb & Self Propelled]
- Jack-up Barge
- Self-Elevated platform
- Submersible barge
- OSV
- Mooring Equipment,
- Buoys,
- Small Ships
- Cassion Gates.



Unique Features –

The Jack-up can be assembled in 7 different configurations.

Moon pool at the center can be configured as per usage requirement. Spud pipes had been bolted & the interlocking arrangement for joining at site is made of Alloy steel.



Crew Boat

Offshore Crew Boat of capacity 30 pax +6 crew. Built for the 1st time in India under IRS Class.

Designed for Offshore Supply of men & material. Standby vessel.

Plying Limit:-	200 nautical miles
Classification:-	IRS
Notation :-	"𑂔SUL, LC, RS2, 𑂔IY"
Special Code	SPS Code
Operational Registry	Sea State - 3 Mumbai

Special Projects

We are capable of manufacturing various custom built Equipment's & Pilot Projects for different industries as per clients requirement in Turnkey basis.

It includes Detail design, Procurement, fabrication, assembly, and piping, Insulation of diff grades, Rubber lining, F.R.P lining, and Trial run at our yard & Final Delivery in Modules.



Inspection & Classification Societies:-

Our Ships are built As per IACS Rule requirement

We have supplied Equipment's , Ship for projects within India & overseas under strict Inspection of 3rd party Societies Viz : BV, TUV, RINA, IRS ,GIL ,LRIS , ABS ,DNV, UHDE & other agencies

Contact US @

Emails : Ghoshal@suryadipta.com , Deep@fabricationindia.com

Web: www.fabricationindia.com , www.suryadipta.com

Mr. S Ghoshal Managing Director : + 91 9870094173

Mr. Deep Ghoshal Director Projects Planning : + 91 9870000475



Address

Heavy Engineering Yard 1 & H.O
Kherani Compund , Retibunder ,
Ghoubunder Village ,
Mira Road [E] , Thane - 401107 INDIA

Ship Building Yard 2
Famous Compund , Retibunder,
Ghoubunder Village Mira Road [E]
Then 401017 INDIA



Pile Guide Frame :

Built for India's largest Jack up Barge Samrat ,it is hydraulically driven in X-Y Direction to guide & position vertical as well a racker pile ,Each guide weighs 100 Tons Size : 3.4 mtr x 5.5 mtr x 12 mtr. It is manufactured, transported, erected & commissioned by Suryadipta Projects [S.P.P.L] at DAHEJ

Employee Competency Matrix

1) Available permanent work force.

Managing Director	1
Director Production [Yard Manager]	1
Naval Consultant	1
Production & Planning Engineer	1
Quality engineer	1
Junior production engineer	1
Purchase manager	1
Store manager	2

Fitter supervisor	2
Welder supervisor	2
Skilled Manpower	40
Unskilled manpower	20
Temporary work force	75 or more

2) Temporary work force -: Temporary work force can be created depending upon requirement of job

3) Manpower available with qualification

- Managing Director / Yard manager –Mechanical Engineer , with 40 + years of Work exp
- Naval Consultant – Naval Architect IIT Khargpur ,M.Sc [UK] , PGD [DNV-Norway]
Ex-G.M in Garden Reach Builders & Engineers LTD, 40+ years of Experience in Shipbuilding
- Director of Production & Planning – B.E mechanical, executive management in marketing & H.R with 5 yrs work experience
- Quality engineer – Diploma in mechanical – with 30 years of work experience
- Junior production engineer – B.E mechanical with 1 yr work experience
- Purchase manager – Commerce Graduate with 15 years work exp
- Store manager – 12 th standard with 20 work exp
- Supervisor -: ITI- with more than 10 years of Work exp
- Skilled workmen -: work exp for more than 3 years
- Unskilled workmen -: Fresher's