



Ship Supply in
Türkiye



The Importance of Türkiye in Ship Supply

Surrounded by the seas on three sides, Türkiye is in an advantageous position for ship supply due to the fact that it is on the transition route between the continents of Asia and Europe.





Ship Supply in Türkiye

Ships have needs like humans. The main needs can be listed as fuel (bunker), oil, water, provisions, technical stores and spare parts. Ships aim to meet their needs with the least deviation from their commercial routes (without any deviation if possible). Commercial sea routes play a decisive role in ship supplies.



There are two main elements that determine trade routes:

- 1- Strategic bottlenecks and channels
- 2- Countries that determine world trade

Strategic bottlenecks and channels:

Strait of Malacca, Strait of Hormuz, Bab El Mandab (Southern Red Sea), Suez Canal, Strait of Gibraltar, Panama Canal, Danish Straits and «**Turkish Straits**».





Our country has two of the eight strategic bottlenecks and is on the routes of the countries that determine world trade.

Our ports that can serve international ship traffic:

Istanbul Port: It is on the route of ships passing through the Turkish Straits.

Izmir Port & Aliğa Port: Adjacent to international ship traffic in the Aegean Sea. It is the place where ports are located and where regional industrial activities open to the world.

Antalya Port: Caters to Industrial and Tourism activities.

Mersin Port: It is one of the largest ports in Türkiye.

Iskenderun Port: It is our port where strategic pipelines meet the world.



Apart from those major supply ports, Turkiye is quite active in the drydocking and shipbuilding industry.

Our shipyard areas that serve the international maritime industry are:

- **Tuzla Shipyards**
- **Yalova Shipyards**
- **Canakkale (Icdas)**





Who We Are?

As a general ship supply company, Arma offers supply services and repair solutions for any request within Türkiye.

With a branch network covering all major supply points of the country, Arma is able to serve 24/7, with a fast response in all ports, straits (Bosphorus & Dardanelles) and shipyards (Tuzla & Yalova & Icdas) of Türkiye.



Arma in figures;

25 years of experience in Ship Supply industry



8 offices in Türkiye



5 liasion offices
worldwide



7 warehouses



215 employees



80 vehicles



10000+ stock item
categories



10000+ supplies
per year



100+ served port



Izmir Headquarters

- Bonded (Transit) Warehouse
- Local Warehouse(s)
- 1000 m² Closed Space
- 500 m² Open Space
- 750 m² Closed Space



Tuzla Branch

- Local Warehouse
- 1000 m² Closed Space



Istanbul (Bosphorus)

*Operational
Branch Office*

Canakkale (Dardanelles)

*Operational
Branch Office*

Bandirma

*Operational
Branch Office*

Mersin

*Operational
Branch Office*

Iskenderun

Branch Office

Yalova Branch-1

- Bonded (Transit) Warehouse
- Local Warehouse(s)
- 800 m² Closed Space
- 900 m² Open Space
- 600 m² Closed Space



Yalova Branch-2

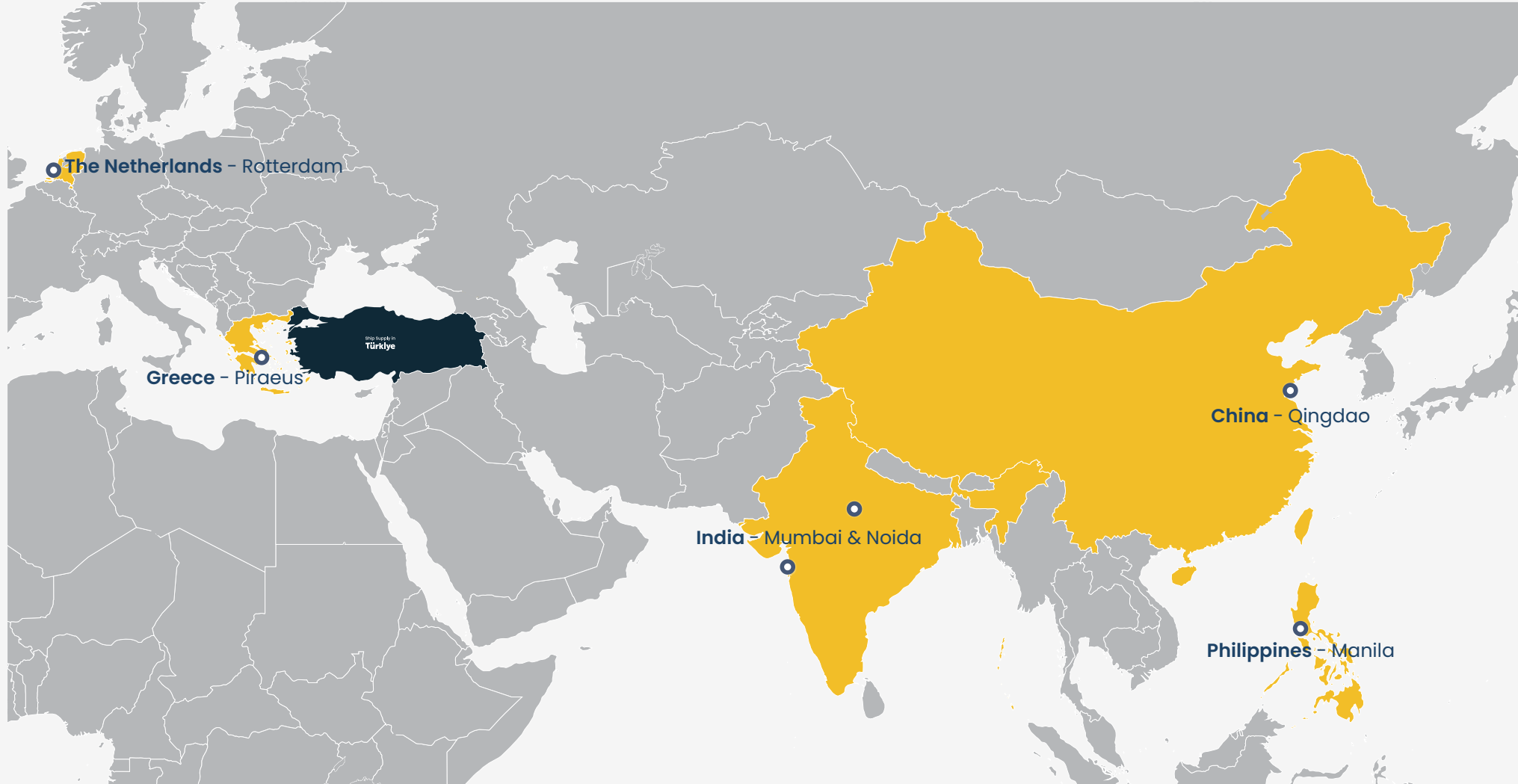
- Bonded (Transit) Warehouse
- 1100 m² Closed Space
- 2300 m² Open Space



Office & Warehouse Locations of
ARMA INT'L SHIP SUPPLY INC.



Overseas Liasion Offices:





Our Supply Chain & Key Services

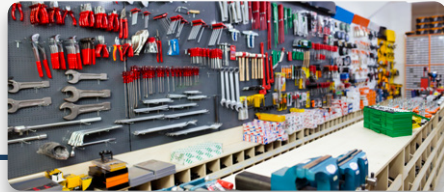
With offices covering all Turkish Waters and limitless stock, Arma strives to be the supplier of choice by offering the best service standards, the most optimal response time and the highest level of professionalism in the ship supply industry. By having its in-house customs office for clearance, transit and local warehouses for sorting and a countrywide service network to transfer on board, Arma offers fast and efficient customs clearance with over twenty-two years of experience. That allows Arma to provide an affordable, fast and all-inclusive service to its valued customers.



Key Products & Stocks



Provision & Victualling



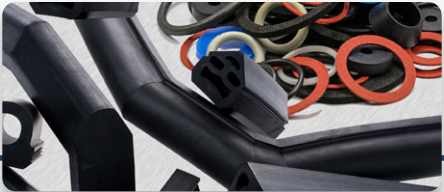
General Stores & Consumables



Ships' Spares in Transit



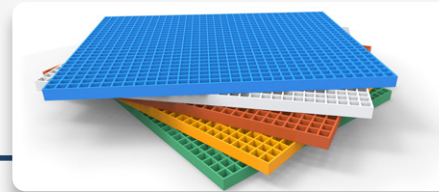
Valves & Valve Accessories



Rubber Packing & Gaskets & Seals



Ropes & Wires



FRP Gratings



Marine Power Cables



Container Lashing & Fixing Equipments



Anchor & Chain Cables



Cruise Ship Supply



Navy Ship Supply



Victualling & Catering

- * fresh provisions
- * frozen provisions
- * canned provisions
- * dry provisions
- * slop-chest
- * bonded stores

Eligible to international food safety standards, Arma offers a wide range of fresh, frozen and dry provisions to cater to diverse preferences and needs while remaining fully compliant with the high demands of today's food supply chain. The company assures to have stock that is optimized for any need of crew. Through trusted supplier relationships, Arma is able to source the finest products while its significant purchasing power guarantees customers the most competitive pricing.





General Stores & Consumables

- * cabin stores
- * deck stores
- * engine stores
- * electrical stores
- * safety stores & pyrotechnics
- * marine valves & accessories
- * ropes & wires
- * lashing equipment
- * anodes
- * anchors & chain cables
- * rubber packings & hatch cover sealings
- * marine cables
- * FRP Gratiings
- * BA charts & publications
- * marine electronics & navigation equipment

On top of provision and bonded stores supply, technical stores supply is the line business of Arma in the ship supply industry. The company is able to supply customers' vessels with the correct products, on time and at a competitive price. The strong and limitless stock of various technical stores and consumables allows Arma to take a step forward from its competitors and be solution-oriented.





Shipyards Supply Management

- * technical stores Supply
- * life-saving appliances (LSA) services & firefighting appliances (FFA) services & certification
- * life raft, lifeboat, rescue boat and davit services, re-certification
- * electric motor, general service pump and multifunctional pump repairs & spare part assistance
- * Hose handling crane, provision crane and accommodation ladder load test
- * gas detection services & certification
- * fabrication of deck and machinery spares & installation (if needed) such as roller fairleads, panama chocks, guide roller, mooring bollards, etc.
- * repair services during port and anchorage stay with classified team
- * reconditioning of deck and engine machinery spares
- * pressure testing and inspection of existing pipelines
- * tank cleaning
- * underwater inspection and cleaning with video recording at port & anchorage stay
- * BWTS pipe fabrication according to provided drawings by classified welders
- * bridge electronic equipment services such as radio survey, gyro compass, etc.



Shipyard Supply Management

With offices at Tuzla, Yalova and Icdas (Canakkale), near all major shipyard areas of Türkiye, Arma is able to give close contact services and on-time supplies according to any demand during drydocking processes. The experienced teams of Arma are able to visit and assist the vessels on short notice at shipyards. Accordingly, with an extensive network of long-term sub-contractors, Arma offers the following services.

**Besides shipyard areas, Arma is also able to provide below services at the ports of Türkiye.*





Ships' Spares in Transit

- * customs clearance
- * warehousing
- * direct delivery on board via transportation with a self-owned vehicle fleet

With its in-house customs department and free zone warehouse, Arma arranges a tailormade service for customs clearance, warehousing and direct delivery on board for “ships’ spares in transit”. Controlling this whole process internally ‘without the interference of external parties’ dramatically cut down costs, as well as delivery lead time. Furthermore, this one-stop service ensures a safer process of getting spares to the ship or any other destination. In light of this, Arma offers to keep the shipments/spare parts in its own bonded warehouse and supply along with pending orders directly on board as a consolidated one-time supply package.





Cruise Ship Supply

- * food and provisions
- * beverages and bonded stores
- * hotel and galley stores
- * consumables

As having an inherent advantage to being located between the Black Sea and the Mediterranean Sea, Türkiye is a huge port of call for most reputable cruise companies. Arma caters to the specific demands of cruise vessels which call cruise ports such as Istanbul, Kusadasi, Bodrum, Antalya, Izmir, Cesme and Canakkale. The goal of the company is to supply the cruise operators with the highest quality products and best possible service in Türkiye.

Accordingly, commitment and service ensure passengers on board have the finest culinary experiences which is one of the most critical factors in cruise voyage satisfaction.





Offshore Supply Management

- * provisions supply
- * technical stores supply
- * ships' spares in transit services

Arma has significant experience in the supply of multipurpose support vessels, offshore platforms, research/survey vessels and PSV supply operations in the Black Sea, Marmara and the Mediterranean Sea.



By considering the offshore industry always as an emerging market, Arma tries to give the best service to the customers and make sure to arrange supplies in the shortest time with the highest quality. Quick response to the customer's needs in the past has shown and is still showing that Arma is a trusted partner that knows how important speed, quality, effectiveness are such important in the multipurpose support vessels and offshore supply operations.



Navy Ship Supply

- * provisions supply
- * technical stores supply
- * spare parts supply

Arma provides the full range of ship supplies to navy vessels.

The company is proud to have been chosen by several countries to be the preferred supplier for their navy's needs in Türkiye.





Defense & Humanitarian Relief Supply

- * food & beverage supply
- * catering organizations
- * consumables & field equipment supply

In the event of a natural disaster, war or any other unfortunate situation, Arma also has experience of supplies to be served to refugee camps, villages, countries and aid organizations to give service/ assistance according to customer's demand.

Ultimately the wish is that such requisitions are not needed at all but when the state of emergency occurs Arma is ready to assist.





Ship Supply in
Türkiye