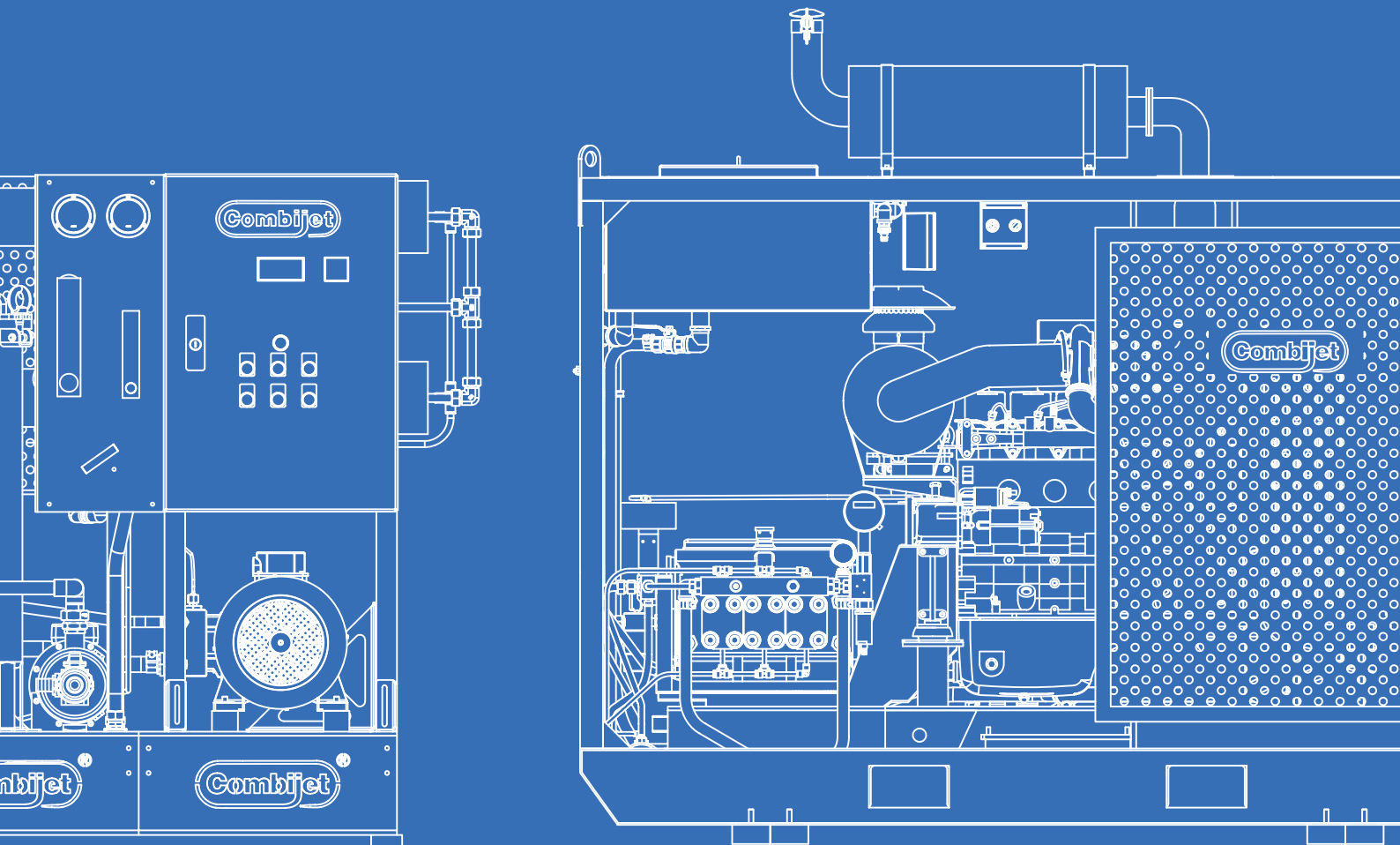




HIGH PRESSURE WATER JETTING EQUIPMENT





A leader in water jetting technology

COMBIJET is a manufacturer and supplier of high pressure water jetting equipment, reverse osmosis systems and industrial cleaning machinery.

Backed by high-end components, thorough engineering and European build quality, our products serve a wide spectrum of industries globally.

Whether it is marine, oil & gas, construction or heavy-industry applications, professionals trust in our products to carry out their projects cost-effectively and reliably.

Our range covers an array of products for the most demanding environments, including pressure washers (from 150 bar up to 250 bar), Jet Cleaners (up to 500 bar) and Ultra High Pressure Water Blasters (from 800 bar up to 2800 bar).

With a full range of tools and accessories, engineered and manufactured for high pressure ratings, we deliver to the end-user a complete solution for most projects or applications.

As a highlight of the range, we offer the innovative COMBIJET Robots, suitable for high pressure cleaning and blasting of steel surfaces and structures.

COMBIJET produces a line-up of reverse osmosis systems (water-makers), for water treatment applications. The modular construction, small footprint and low-consumables make these systems ideal for challenging installations, such as marine and offshore vessels.

Additionally, we offer worldwide hydro blasting services, where our specialized equipment and experienced teams travel to carry out projects on site.

Utilizing our expertise and know-how, we can meet any design specifications for tailor-made solutions.

Global Presence and Service throughout the World

Through our worldwide network of stocking points, we ensure that you can obtain all your high-pressure jetting equipment, accessories and spare parts from convenient location at all times.

- OUR CURRENT STOCKING POINTS:**
- Cyprus (Headquarters and Manufacturing)
 - Singapore
 - Antwerp, Belgium
 - Dubai, UAE
 - Houston, USA



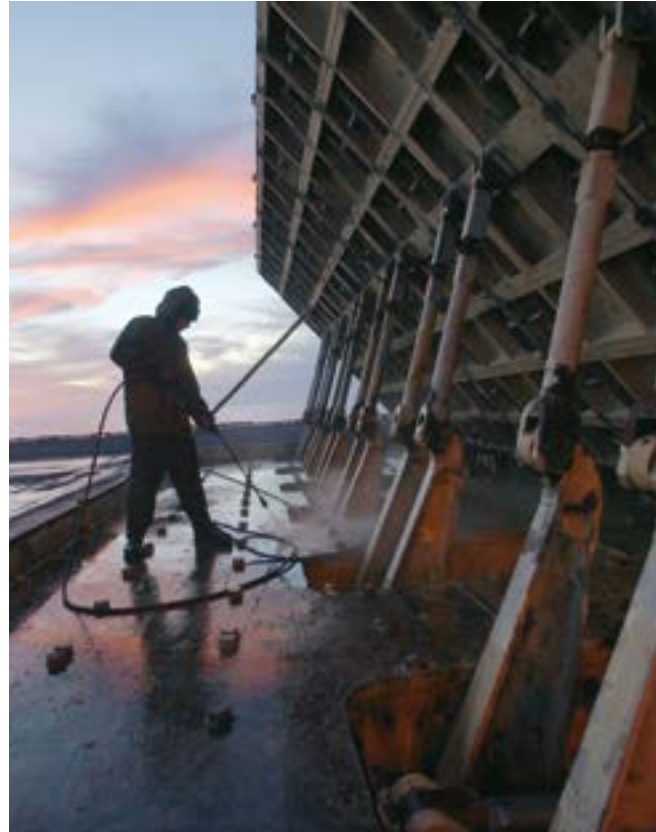
COMBIJET for Seagoing & Offshore Vessels

The marine industry is vital for international trade, as over 80% of shipping is carried out by sea transport.

Seagoing vessels and structures need to be maintained to increase efficiency and reduce downtime.

COMBIJET provides a full range of high pressure water jetting equipment, specifically designed for the marine sector. Whether it is pressure washing, cargo hold cleaning or paint & rust removal, our equipment are the perfect solution for keeping vessels in optimal condition.

Additionally, our reverse osmosis systems, that run independent of the main engine, provide fresh water to the vessel, for accommodation, washing and boilers.



COMBIJET for Shipyards & Dry-docks

Shipyards are the backbone of the marine industry, as vessels and offshore structures need to be maintained on a regular basis to operate safely and effectively.

That's where COMBIJET equipment come in, providing a multitude of solutions for the industry. Starting with pressure washing of vessels, to remove salts, barnacles and sea growth, and then carrying out structural inspections, our high pressure cleaners and tools are designed to facilitate the cleaning operation.

During most dry docking projects, surface maintenance is required to remove the existing paint and corrosion, and prepare the surface for the application of new coatings.

COMBIJET ultra high pressure water blasters enable shipyards to carry out paint stripping and surface preparation, with the use effective tools and innovative solutions, such as the COMBIJET cleaning and hydroblasting robots, to deliver projects effectively with a quick turnaround.



COMBIJET for construction

The construction industry relies heavily on water jetting equipment in everyday operations.

Whether it's cleaning of construction equipment, maintenance of steel structures, removal of concrete from scaffolding and formwork, concrete renovation and roughening or hydro-demolition, high pressure machines are essential for every job site or development project.

That is why at COMBIJET, we are focused on supporting the construction and development industries, with a comprehensive range of equipment and accessories, enabling operators and service providers to tackle all challenges, with reliable, safe and economical solutions.



COMBIJET for heavy industry

From factories, mills, foundries, to processing, chemical and power plants, heavy industries form the cornerstone of all industries, commerce and everyday life.

Running such facilities involves critical components that are vital to the operation, while at the same time requiring regular maintenance and servicing.

COMBIJET equipment and tools are used daily in numerous heavy industry applications, such as surface cleaning and blasting, pipe, tube and heat exchanger servicing and storage tanks & silos washing & surface maintenance.

The ease of use, high productivity and minimum downtime ensure that shutdown operations are done effectively and on time.

Water-jetting systems
up to 350 bar (up to 5,000 PSI)

The pressure range up to 350 bar includes a wide selection of models with Electric, Diesel, Petrol and Pneumatic drives, as well as Hot & Cold pressure washers. Compact units, designed for heavy duty work for many applications, COMBIJET is the choice to go for when reliability is key.



ELECTRIC Cold Water

Max. Pressure
Max. Flow Rate
Power Supply
Machine Dimension LxWxH / Weight

JE10-1407

140 Bar / 2030 PSI
7 LPM / 1.85 GPM
230V 50Hz
37x37x62 cm / 18.5 Kg / 40.8 lbs

Operat. pressure/max
Delivery Rate
Abs. Power/Voltage
Machine Dimension LxWxH / Weight

JE10-1510

30-150 Bar (max 160 Bar)
5.79 - 9 l/min
3000 W / 230V - 50Hz 1 ph
76x41x75 cm / 33 Kg / 72.6 lbs

Operating Pressure (bar)
Operating Pressure (psi)
Power/Voltage
Machine Dimension LxWxH / Weight

JE20-1211

30-125 Bar
435 - 1812 psi
3000 W / 230V - 50Hz 1 ph
50x90x83 cm / 44 Kg / 96.8 lbs

Operating Pressure (bar)
Operating Pressure (psi)
Power/Voltage
Machine Dimension LxWxH / Weight

JE20-2018

30-200 Bar
435 - 2900 psi
8400 W / 380V - 60Hz 3 ph
50x60x107 cm / 53 Kg / 117 lbs

Working Pressure
Flow Rate
Electric Power / Power Supply
Machine Dimension LxWxH / Weight

JE20-160/20HT

160 Bar / 2.320 PSI
19 lpm / 5.0 GPM
7.5 kW / 10 HP / 440V 60 Hz
800 x 600 x 600 mm / 90 Kg

Working Pressure
Flow Rate
Electrical Motor
Machine Dimension LxWxH / Weight

JE60-350 / 50Hz

350 Bar / 5075 PSI
18 lpm / 4.7 GPM
14.75 hp / 11 kW / 380-400V
100x66x92 / 140 Kg

JE10-2015

30- 200 Bar (max 160 Bar)
7.5 -15 l/min
7000 W / 400V - 50Hz 3 ph
76x41x75 cm / 44 Kg / 96.8 lbs

JE20-2015

30-200 Bar
435 - 2900 psi
7000 W / 400V - 50Hz 3 ph
50x90x83 cm / 47.5 Kg / 104.5 lbs

JE20-2513

30 - 250 Bar
435 - 3600 PSI
8700 kW / 380V 60Hz 3 ph
50x60x107 cm / 56 Kg / 123 lbs

JE20-200/18HT

200 Bar / 2.900 PSI
18 lpm / 4.75 GPM
7.5W / 10 HP / 440V 60 Hz
825 x 625 x 625 mm / 105 Kg

JE60-350 / 60Hz

350 Bar / 5075 PSI
22 lpm / 5.8 GPM
14.75 hp / 11 kW / 400 - 440 V
100x66x92 / 140 Kg



DIESEL Cold Water

Working Pressure
Flow Rate
Engine Power
Machine Dimension LxWxH / Weight

JD90-275

275 bar / 3.990 PSI
13 lpm / 3.43 GPM
7.5 kW / 3600 RPM
900 x 700 x 850 mm / 85 Kg

JD90-350/27

350 bar / 5.075 PSI
27 lpm / 7.03 GPM
20.5 kW / 1720 RPM
1200 x 800 x 1050 mm / 575 Kg

PETROL Cold Water

Operating Pressure
Flow Rate
Engine Power
Machine Dimension LxWxH / Weight

JP9-200

200 Bar / 2900PSI
13 lpm / 3.43 GPM
9 hp
103x50x67 cm / 45 Kg

JP13-250

250 Bar / 3625 PSI
17 lpm / 4.49 GPM
13 hp
100x66x92 cm / 61 Kg

PNEUMATIC / AIR DRIVEN Cold Water

Working Pressure
Flow Rate
Power
Machine Dimension LxWxH / Weight

JA20-275

275 Bar / 4.000 PSI
12 lpm/ 3.2 GPM
9.5 kW / 13 HP
650 x 460 x 610 mm / 85 Kg

JA20 - 300/21

300 Bar / 4.350 PSI
21 lpm / 5.54 GPM
13 kW /17.50 HP
800 x 600 x 700 mm / 110 Kg

ELECTRIC Hot & Cold Water

Operating Pressure/Mx
Operating Pressure/Max.
Power/Voltage
Machine Dimension LxWxH / Weight

JE30-1310D

30-130 Bar (max 150 bar)
435-1885 PSI (2175 max PSI)
3000 W / 230V 50Hz 1 ph
80x55x83 cm / 54 Kg / 1212 lbs

JE30-1211

30-110 Bar / 150 Bar
4.35-1595 PSI /2175 PSI
3000 W / 230 V 50Hz 1 ph
94x65x90 cm / 125 Kg /275 lbs

JE30-2016

30-200 Bar
435-2900 PSI
7300 W / 400 V 50Hz 3 ph
94x65x90 cm / 130 Kg / 284 lbs

JE30-2018

30-200 Bar
435-2900 PSI
8700 W / 380 V 60Hz 3 ph
125x69x87 cm / 175 Kg / 385 lbs

Water-jetting systems up to 500 bar (up to 7,250 PSI)

Our 500 bar class of machines includes an impressive range of heavy duty jet cleaners, with unparalleled versatility & suitable for many applications. Powerful, robust and reliable, the 500 bar is the ultimate choice for the most demanding jobs. Electric or Diesel engine drive, the machines can be offered in various mounting options and a range of accessories.



KEY FEATURES



Inlet Pressure Sensor
[Dry run protection]

Robust Stainless
Steel Frame AISI 316

Slim Chassis
Width 550mm

Front castor wheel
with Brake

Washable Water Filter



Convenient Lifting Bar



Control Panel (IP65)
with Hourmeter

Star Delta (Y Δ)
starting system

Dual Frequency
50hz & 60hz

Thermal Valve
(Overheat protection)

Solid rear wheels
with aluminum hub

Fully Enclosed Bell-housing
+ Flexible Coupling



Hand adjustable Pressure
Regulator [150 500 bar]



ELECTRIC

Working Pressure	500 Bar / 7250 PSI
Flow Rate (@50Hz)	16 lpm / 4.2 GPM
Flow Rate (@60Hz)	19 lpm / 5.0 GPM
Electric Power	20 hp / 15 kW
Machine Dimension LxWxH / Weight	1070 x 550 x 900 mm / 245 Kg

JE60-500 / 50Hz & 60Hz



Available in ATEX Explosion Proof version

Dual Pump

Working Pressure
Flow Rate
Electric Power
Machine Dimension LxWxH / Weight

High Flow

Working Pressure
Flow Rate
Electric Power
Machine Dimension LxWxH / Weight



JE80-500D / 50Hz or 60Hz

500 Bar / 7250 PSI
2 x 16 / 19 lpm / 2 x 4.2 / 5 GPM
30 kW / 40 HP / 400V / 50Hz / 440V / 60Hz
1600 x 900 x 1400 mm / 600 Kg



JE80-500/30

500 Bar / 7250 PSI
30 lpm / 7.9 GPM
400V / 50 Hz or 440V / 60Hz / 30 kW / 40 HP
1500 x 750 x 1000 mm / 450 Kg

JE80-500/40

500 Bar / 7250 PSI
40 lpm / 10.5 GPM
400V 50Hz / 440V 60Hz / 30 kW / 40 HP
1600 x 1000 x 1200 mm / 650 kg

JE80-500/55

500 bar / 7,250 PSI
55 lpm / 14.5 GPM
400V 50Hz or 440V 60Hz / 55 kW / 75 HP
2000 x 1750 x 1800 mm / 1600 kg



JD90-500

500 Bar / 7250 PSI
18 lpm / 4.75 GPM
20 kW / 27 HP
1200 x 800 x 1050 mm / 450 Kg



JD90-500/30

500 Bar / 7250 PSI
30 lpm / 7.9 GPM
40kW / 55 HP
2100 x 1100 x 1750 mm / 1050 kg

JD90-500/40

500 bar / 7250 PSI
40 lpm / 10.5 GPM
50-55 kW / 65-75 HP
2100 x 1100 x 1750 mm / 1050 kg

JD90-500/55

500 bar / 7,250 PSI
55 lpm / 14.5 GPM
65-75kW / 85-100 HP
2250 x 1750 x 1800 mm / 1750 kg

DIESEL

Working Pressure
Flow Rate
Engine Power
Machine Dimension LxWxH / Weight

Working Pressure
Flow Rate
Engine Power
Machine Dimension LxWxH / Weight

Water-jetting systems
up to 1000 bar
(up to 15,000 PSI)

The entry level to hydroblasting systems, our range of machines up to 1000 bar offer unparalleled performance for heavy cleaning and blasting works.

High-end components, combined with innovative designs and exceptional build quality, mean that the machines will perform even in the most demanding environments & conditions.



ELECTRIC

Working Pressure
Flow Rate
Electric Power
Machine Dimension LxWxH / Weight

JE80-800

800 Bar / 11600 PSI
15 lpm / 3.69 GPM
400V/50Hz or 440V/60Hz / 430 kW / 40 HP
1700 x 980 x1200 mm / 750 Kg

JE80-1000

1000 Bar / 14500 PSI
15 lpm / 3.69 GPM
400V/50Hz or 440V/60Hz / 30 kW / 40 HP
1700 x 980 x1200 mm / 750 Kg

Working Pressure
Flow Rate
Electric Power
Machine Dimension LxWxH / Weight

JE80-1000/30

1000 Bar / 14.500 PSI
30 lpm / 7.9 GPM
55-65 kW / 75-86 HP
2000 x 1750 x 1800 mm / 1800 kg

JE80-1000/40

1000 Bar / 14.500 PSI
40 lpm / 10.5 GPM
75-90 kW / 100-120 HP
2000 x 1750 x 1800 mm / 2000 kg

Working Pressure
Flow Rate
Electric Power
Machine Dimension LxWxH / Weight

JE80-1000/65

1000 Bar / 14.500 PSI
65 lpm / 17 GPM
132 kW / 175 HP
2250 x 1850 x 1900 mm / 2300 kg

JE80-1000/90

1000 Bar / 14.500 PSI
90 lpm / 24 GPM
200 kW / 265 HP
3300 x 2600 x 2000 mm / 3500 kg

MOUNTING OPTIONS

- Soundproof / Weatherproof Enclosure
- Mobile Trailer on Wheels
- Container Setup (10ft / 20ft)



DIESEL

Working Pressure
Flow Rate
Engine Power
Machine Dimension LxWxH / Weight

JD90-800

800 Bar / 11600 PSI
15 lpm / 3.69 GPM
40-45kW / 50-60 HP
2100 x 1100 x 1750 mm / 1050 kg

JD90-1000

1000 Bar / 14500 PSI
15 lpm / 3.69 GPM
40-45kW / 50-60 HP
2100 x 1100 x 1750 mm / 1050 kg

Working Pressure
Flow Rate
Engine Power
Machine Dimension LxWxH / Weight

JD90-800/25

800 bar / 11,600 PSI
25 lpm / 6.6 GPM
50-55 kW / 65-75 HP
2100 x 1100 x 1750 mm / 1050 kg

JD90-1000/21

1000 Bar / 14.500 PSI
21 lpm / 5.5 GPM
50-55 kW / 65-75 HP
2100 x 1100 x 1750 mm / 1050 kg

Working Pressure
Flow Rate
Engine Power
Machine Dimension LxWxH / Weight

JD90-1000/30

1000 Bar / 14.500 PSI
30 lpm / 7.9 GPM
75 kW / 100 HP
2250 x 1750 x 1900 mm / 2300 kg

JD90-1000/40

1000 Bar / 14.500 PSI
40 lpm / 10.5 GPM
100 kW / 135 HP
2250 x 1750 x 1900 mm / 2300 kg

Working Pressure
Flow Rate
Engine Power
Machine Dimension LxWxH / Weight

JD90-1000/65

1000 Bar / 14.500 PSI
65 lpm / 17 GPM
150-160 kW / 200-215 HP
2250 x 1750 x 1900 mm / 2700 kg

JD90-1000/90

1000 bar / 14,500 PSI
90 lpm / 24 GPM
225-250 kW / 300-335 HP
3300 x 2600 x 2000 mm / 3500 kg



Optional:
Offshore Engine Setup
(Spark Arrester / Shutoff Valve)

Water-jetting systems
up to 1500 bar
(up to 22,000 PSI)

Powerful, robust and built-to-last.
COMBIJET range of 1,500 bar hydroblasters is the first choice for contractors and service providers for ultimate productivity.
The machines in this class serve many applications, including blasting, surface preparation and heavy cleaning of concrete.



ELECTRIC

Working Pressure
Flow Rate
Electric Power
Machine Dimension LxWxH / Weight

JE80-1500

1500 Bar / 21755 PSI
13 lpm / 3.43 GPM
37 kW / 50 HP
1750 x 1000 x 1100 mm / 750 Kg

JE80-1500/20

1500 Bar / 21755 PSI
20 lpm / 5.28 GPM
55-65 kW / 75-86 HP
2000 x 1750 x 1800 mm / 1250 kg

Working Pressure
Flow Rate
Electric Power
Machine Dimension LxWxH / Weight

JE80-1500/30

1500 Bar / 21755 PSI
30 lpm / 7.9 GPM
90 kW / 120 HP
2000 x 1750 x 1800 mm / 2000 kg

JE80-1500/45

1500 Bar / 21755 PSI
45 lpm / 11.9 GPM
132 kW / 175 HP
2250 x 1850 x 1900 mm / 2300 kg

Working Pressure
Flow Rate
Electric Power
Machine Dimension LxWxH / Weight

JE80-1500/55

1500 Bar / 21755 PSI
55 lpm / 14.5 GPM
160 kW / 215 HP
2500 x 1900 x 1900 mm / 2750 kg

JE80-1500/75

1500 bar / 21755 PSI
75 lpm / 19.8 GPM
225 kW / 300 HP
3300 x 2600 x 2000 mm / 3500 kg

- Soundproof / Weatherproof Enclosure
- Mobile Trailer on Wheels
- Container Setup (10ft / 20ft)



DIESEL

Working Pressure
Flow Rate
Engine Power
Machine Dimension LxWxH / Weight

JD90-1500

1500 Bar / 21755 PSI
14 lpm / 3.7 GPM
50-55 kW / 65-75 HP
2100 x 1100 x 1750 mm / 1050 kg

JD90-1500/20

1500 Bar / 21755 PSI
20 lpm / 5.28 GPM
75-90 kW / 100-120 HP
2250 x 1600 x 1900 mm / 1750 kg

Working Pressure
Flow Rate
Engine Power
Machine Dimension LxWxH / Weight

JD90-1500/30

1500 Bar / 21755 PSI
30 lpm / 7.9 GPM
100 kW / 135 HP
2250 x 1750 x 1900 mm / 2300 kg

JD90-1500/45

1500 Bar / 21755 PSI
45 lpm / 11.9 GPM
150-160 kW / 200-215 HP
2250 x 1750 x 1900 mm / 2500 kg

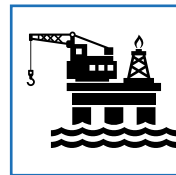
Working Pressure
Flow Rate
Engine Power
Machine Dimension LxWxH / Weight

JD90-1500/55

1500 Bar / 21755 PSI
55 lpm / 14.5 GPM
180-190 kW / 240-255 HP
2500 x 1900 x 1900 mm / 3000 kg

JD90-1500/75

1500 bar / 21,755 PSI
75 lpm / 19.8 GPM
250 kW / 335 HP
3300 x 2600 x 2000 mm / 3500 kg



Optional:
Offshore Engine Setup
(Spark Arrester / Shutoff Valve)

Water-jetting systems up to 2800 bar (up to 40,000 PSI)

The flagship of the range, our ultra high pressure water blasters are manufactured with three key aspects in mind:
Reliability, Safety and Performance
With the latest pump and drive technologies, together with application engineering and innovative tools, the COMBIJET UHP systems are second-to-none.

ELECTRIC

Working Pressure
Flow Rate
Electric Power
Machine Dimension LxWxH / Weight

JE80-2100/17

2100 Bar / 30.458 PSI
17 lpm / 4.5 GPM
75kW / 100 HP
2000 x 1750 x 1800 / 1800 kg

JE80-2100/22

2100 Bar / 30.458 PSI
22 lpm / 5.4 GPM
90kW / 120 HP
2250 x 1750 x 1800 / 2000 kg

Working Pressure
Flow Rate
Electric Power
Machine Dimension LxWxH / Weight

JE80-2500/13

2,500 bar / 36,250 PSI
13 lpm / 3.4 GPM
65 kW / 86 HP
2000 x 1750 x 1800 mm / 1800 kg

JE80-2500/17

2,500 bar / 36,250 PSI
17 lpm / 4.5 GPM
90 kW / 120 HP
2250 x 1750 x 1800 mm / 2000 kg

Working Pressure
Flow Rate
Electric Power
Machine Dimension LxWxH / Weight

JE80-2500/22

2500 Bar / 36,250 PSI
22 lpm / 5.8 GPM
110 kW / 146 HP
2250 x 1750 x 1800 mm / 2200 kg

JE80-2500/32

2500 Bar / 36.259 PSI
32 lpm / 8.45 GPM
160 kW / 215 HP
2250 x 1850 x 1900 mm / 2500 kg

Working Pressure
Flow Rate
Electric Power
Machine Dimension LxWxH / Weight

JE80-2500/40

2500 Bar / 36,250 PSI
40 lpm / 10.5 GPM
200kW / 265 HP
3000 x 2000 x 2000 mm / 3000 kg

Working Pressure
Flow Rate
Electric Power
Machine Dimension LxWxH / Weight

JE80-2800/13

2,760 bar / 40,000 PSI
13 lpm / 3.43 GPM
75 kW / 100 HP
2000 x 1750 x 1800 mm / 1800 kg

JE80-2800/22

2,760 bar / 40,000 PSI
22 lpm / 5.8 GPM
132 kW / 175 HP
2250 x 1850 x 1800 mm / 2300 kg

Working Pressure
Flow Rate
Electric Power
Machine Dimension LxWxH / Weight

JE80-2800/26

2800 Bar / 40.611 PSI
26 lpm / 6.9 GPM
160 kW / 215 HP
2250 x 1850 x 1900 mm / 2500 kg

JE80-2800/40

2,760 bar / 40,000 PSI
40 lpm / 10.5 GPM
250 kW / 335 HP
3300 x 2600 x 2000 mm / 3500 kg



DIESEL

Working Pressure
Flow Rate
Engine Power
Machine Dimension LxWxH / Weight

JD90-2100/17

2100 Bar/30450 PSI
17 lpm / 4.5 GPM
100 kW / 135 HP
2000 x 1750 x 1800 mm / 2000 kg

JD90-2100/22

2100 Bar/30450 PSI
22 lpm / 5.8 GPM
100 kW / 135 HP
2000 x 1750 x 1800 mm / 2000 kg

Working Pressure
Flow Rate
Engine Power
Machine Dimension LxWxH / Weight

JD90-2500/13

2,500 bar / 36,250 PSI
30 lpm / 7.92 GPM
100kW / 135 HP
2000 x 1750 x 1900 mm / 2000 kg

JD90-2500/17

2,500 bar / 36,250 PSI
17 lpm / 4.5 GPM
100kW / 135 HP
2250 x 1750 x 1900 mm / 2300 kg

Working Pressure
Flow Rate
Engine Power
Machine Dimension LxWxH / Weight

JD90-2500/22

2,500 bar / 36,250 PSI
22 lpm / 5.8 GPM
150-160 kW / 200-215 HP
2250 x 1750 x 1900 mm / 2500 kg

JD90-2500/32

2,500 bar / 36,250 PSI
32 lpm / 8.45 GPM
180-190 kW / 240-255 HP
2500 x 1900 x 1900 mm / 3000 kg

Working Pressure
Flow Rate
Engine Power
Machine Dimension LxWxH / Weight

JD90-2500/40

2,500 bar / 36,250 PSI
40 lpm / 10.5 GPM
225-250 kW / 300-335 HP
3300 x 2600 x 2000 mm / 3500 kg

Working Pressure
Flow Rate
Engine Power
Machine Dimension LxWxH / Weight

JD90-2800/13

2,760 bar / 40,000 PSI
13 lpm / 3.43 GPM
100 kW / 135 HP
2250 x 1750 x 1900 mm / 2300 kg

JD90-2800/22

2800 Bar / 40.611 PSI
22 lpm / 5.8 GPM
150-160 kW / 200-215 HP
2250 x 1750 x 1900 mm / 2500 kg

Working Pressure
Flow Rate
Engine Power
Machine Dimension LxWxH / Weight

JD90-2800/26

JD90-2800/20
26 lpm / 6.8 GPM
180-190 kW / 240-255 HP
2500 x 1900 x 1900 mm / 3000 kg

JD90-2800/40

2800 Bar / 40.611 PSI
40 lpm / 10.5 GPM
225-250 kW / 300-335 HP
3300 x 2600 x 2000 mm / 3500 kg



Optional:
Offshore Engine Setup
(Spark Arrester / Shutoff Valve)

MOUNTING OPTIONS

- Soundproof / Weatherproof Enclosure
- Mobile Trailer on Wheels
- Container Setup (10ft / 20ft)

Intrinsically Safe
(Explosion Proof / ATEX compliant)
200 bar up to 2800 bar
(2,900 PSI up to 40,000 PSI)



ATEX

Explosion Proof Equipment

When operating in a hazardous environment, within an explosive atmosphere it is of outmost importance that the right equipment is being used. All our products are fully compliant to ATEX Zone 2, strictly following European guidelines and directives, with certified components.



JEX20-200/18

200 bar / 2.900 PSI
18 lpm / 4.75 GPM
7.5 kW / 10 HP
900 x 600 x 900 mm / 95 kg



JEX60-500

500 bar / 7.250 PSI
16 - 19 lpm / 4.2 - 5.0 GPM
15 kW / 20 HP
1290 x 870 x 1130 mm / 390 Kg



JEX80-800

800 bar / 11.600 PSI
15 lpm / 3.96 GPM
30 kW / 40 HP
1800 x 1200 x 1200 mm / 950 Kg

JEX80-1000

1000 bar / 14.500 PSI
15 lpm / 3.96 GPM
30 kW / 40 HP
1800 x 1200 x 1200 mm / 950 Kg

JEX80-1500

1500 bar / 21.755 PSI
13 lpm / 3.43 GPM
37 kW / 50 HP
1800 x 1200 x 1200 mm / 1,100 Kg

JEX80-2500/17

2,500 bar / 36,250 PSI
17 lpm / 4.5 GPM
90 kW / 120 HP
2250 x 1750 x 1800 mm / 2100 kg

JEX80-2500/22

2,500 bar / 36,250 PSI
22 lpm / 5.8 GPM
110 kW / 146 HP
2250 x 1750 x 1800 mm / 2300 kg

JEX80-2800/22

2,760 bar / 40,000 PSI
22 lpm / 5.8 GPM
132 kW / 175 HP
2250 x 1850 x 1800 mm / 2400 kg

ATEX / Explosion Proof

Working Pressure
Flow Rate
Electric Power
Machine Dimension LxWxH / Weight

Working Pressure
Flow Rate
Electric Power
Machine Dimension LxWxH / Weight

Working Pressure
Flow Rate
Electric Power
Machine Dimension LxWxH / Weight

Working Pressure
Flow Rate
Electric Power
Machine Dimension LxWxH / Weight

Modular Reverse Osmosis
(Watermaker) Systems

Reverse Osmosis (RO) systems produce fresh water from sea water, using membrane technology.

The units are used in applications where fresh water availability is limited or sourcing fresh water is cost-prohibitive. The COMBIJET reverse osmosis systems are modular in design, giving the flexibility to the customer to install them in locations where space might be an issue.

Our team of application and design engineers can assist you in your specific installation requirement and redesign the system based on space availability and limitations. For seagoing and offshore vessels, another key advantage is the independence from the main engine running, as these systems are electrically driven and can be run 24/7, producing fresh water continuously.

Engineered to be easy-to-maintain, the running costs for the COMBIJET RO systems are economical in comparison to other water purification systems, with few parts and consumables required to keep the units in optimal condition.

Technical Water Systems

COMBIJET offers additional water purification systems that produce technical water quality, with an extreme low water salinity of 0-5 ppm.

Applications include boilers and heating coils.



MODULAR REVERSE OSMOSIS

(Watermaker) Systems

Productivity (Fresh Water)
Power Supply
Machine Dimension LxWxH / Weight

CRO 030

3 tons/day
400 - 440V / 50-60 Hz
900 x 800 x 900 mm / 250 kg

CRO 050

5 tons/day
400 - 440V / 50-60 Hz
1320 x 900 x 900 mm / 280 kg

Productivity (Fresh Water)
Power Supply
Machine Dimension LxWxH / Weight

CRO 080

8 tons/day
400 - 440V / 50-60 Hz
1320 x 900 x 1100 mm / 300 kg

CRO 120

12 tons/day
400-440V / 50-60 Hz
1320 x 900 x 1100 mm / 320 kg

Productivity (Fresh Water)
Power Supply
Machine Dimension LxWxH / Weight

CRO 200

Up to 22 tons/day
400 - 440V / 50-60 Hz
1320 x 1250 x 1100 mm / 550 Kg

CRO 320

Up to 32 tons/day
400 - 440V / 50-60 Hz
1320 x 1450 x 1100 mm / 700 kg

Productivity (Fresh Water)
Power Supply
Machine Dimension LxWxH / Weight

CRO 500

Up to 50 tons/day
400 - 440V / 50-60 Hz
1600x1500x1800 mm / 750 Kg

XW 100

High Pressure Washing / Cargo Hold Cleaning Robot

Our state-of-the-art X-series washing robot for high pressure cleaning applications on flat steel surfaces.

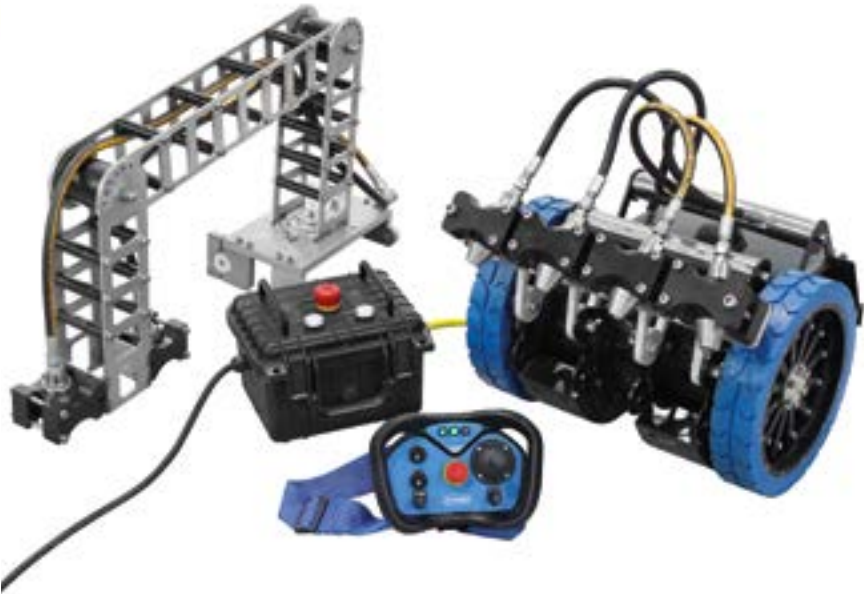
Developed with the latest drive and control technologies, this magnetic crawler delivers high productivity and hassle-free operation. The robot enables shipowners, crew members and service providers to thoroughly clean surfaces in faster, safer and environmentally friendly way, while keeping costs to a minimum. Due to the compact size, this robot can fit most applications, including various vessel cargo hold shapes and hard to reach areas. The wireless remote control operation ensures that the operator is far from the work area, reducing injury risks and increasing safety.

Advantages:

- High productivity and speed of work
- Thorough cleaning of surfaces
- Reduced setup and manpower requirements
- Increased safety due to operator remote control operation
- Eliminates requirement for access equipment (staging, scaffolding or cranes, platforms)
- The ability to work in close proximity to other maintenance processes

XW 100 Washing Robot

Dimensions (L x W x H)	420 x 475 x 465 mm
Weight	30 kg
Max. Drive Speed	Up to 12 meter / min
Power Supply	230V / 16A
Drive Motor Power	2 x 600W
IP Rating	IP69
Washing Productivity	Up to 350 sqm / hr*
Recommended Machine Sizes	500 bar @ 30-55 l/min 1000 bar @ 30 l/min



* Productivity depends on various factors, including machine pressure & flow-rate and surface condition

Cargo Hold Washing Attachment

For washing cargo holds and flat surfaces

The attachment includes:

- 1 x Fixed Nozzle Holder Assembly
- 4 x Rotating Nozzles [rated up to 600 bar]



Extension Arm Washing Attachment

The flexible extension arm mounts on the X-Series robot and enables the washing of hard-to-reach areas.

Made of aluminium, the arm sections can be adjusted manually via easy positioning system, to point the arm into desired direction.

The arm includes 2 Rotating nozzles, mounted at the end of the arm, for effective cleaning.

The attachment includes:

- 1 x Extension Arm Attachment
- 2 x Rotating Nozzles [rated up to 600 bar]



Cargo Hold Derusting Attachment

For blasting/derusting the frames of cargo holds, including flat surfaces, side frames and behind beams.

The tool utilizes one or two rotating nozzles, oscillating side-to-side to ensure thorough blasting of front and sides.

The attachment includes:

- 1 x Attachment Body
- 1 x High-torque E-motor + Oscillation mechanism
- 1-2 x Rotating Nozzles



XJ 300 / XV 300

Ultra High Pressure Water Blasting Robots

Our innovative X-series water blasting robots, for hydroblasting applications on flat steel surfaces.

Utilizing high-end components and the latest control technologies, our magnetic crawlers deliver high productivity and low-downtime operations.

The robots enable maintenance crews and service providers to carry out hydroblasting projects in a faster, safer and environmentally friendly way.

Available with a swing-arm for open type blasting or with a blast-can for enclosed blasting & vacuuming, the robots can be used in a multitude of applications.

The wireless remote control operation ensures that the operator is far from the work area, reducing injury risks and increasing safety.

Seamless and easy control reduces the physical work for the operator, resulting in higher productivity shifts.

Whether it's hydroblasting vessel hulls, storage tank structures or any flat steel surfaces, you can rely on COMBIJET robots to deliver.

Advantages:

- High productivity and speed of work
- Thorough cleaning of surfaces
- Reduced setup and manpower requirements
- Increased safety due to operator remote control operation
- Eliminates requirement for access equipment (staging, scaffolding or cranes, platforms)
- The ability to work in close proximity to other maintenance processes



XJ 300

Open Hydroblasting Robot

Robot Dimensions (L x W x H)
Robot Weight
Max. Drive Speed
Max. Working Width
Power Supply
Drive Motor Power
IP Rating
Recommended Machine Size

1,020 x 570 x 465 mm
57 kg
Up to 12 meter / min
Up to 400 mm
230V / 16A
2 x 600W
IP67
2500-2800 bar @ 30-40 l/min

XV 300

Vacuum Hydroblasting Robot

1,020 x 570 x 465 mm
57 kg
Up to 12 meter / min
Up to 400 mm
230V / 16A
2 x 600W
IP67
2500-2800 bar @ 30-40 l/min



Open Hydroblasting Can Attachment

The tool utilizes a UHP swivel with a nozzle bar holder, carrying the jets and rotating at high speed for effective hydroblasting for paint and rust removal.

The attachment includes:

- 1 x Attachment Body
- 1 x UHP Swivel – rated for 3,000 bar
- 1 x Nozzle Bar + Sapphire Jets



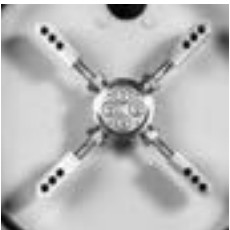
Vacuum Hydroblasting Can Attachment

The tool utilizes a UHP swivel with a nozzle bar holder, carrying the jets and rotating at high speed for effective hydroblasting for paint and rust removal, with the connection of a vacuum unit for suction of water & blasted material.

Through the flexible vacuum seal, the robot can do the blasting without leakage of water into the blasting area, where the water/debris are sucked into the vacuum separator chamber.

The attachment includes:

- 1 x Attachment Body
- 1 x UHP Swivel – rated for 3,000 bar
- 1 x Nozzle Bar + Sapphire Jets
- 1 x Flexible Vacuum Seal
- 1 x Vacuum Connection Port



X-Mini

Mini Vacuum Hydroblasting Robot – Single Blast Can

Our state of the art X-series washing robot in a mini version.

Through it's compact size and dimensions, the robot can tackle areas where space is limited or when high curvature is present.

The wireless remote control ensures that the operator is far from the high pressure cleaning area, reducing injury risks and increasing safety.

The robot's easy & seamless operation eliminates the need for physical water jetting effort, resulting in high ergonomics & productivity shifts.



Ultra High Pressure Thermoplastic Hoses

With a fully integrated hose assembly & testing workshop, we offer a full range of thermoplastic high pressure hoses, reaching pressures up to 4,000 bar (58,000 PSI).

Hose assemblies are crimped and tested in-house by our trained engineers, following thorough procedures & guidelines, with a hose test certificate issued for each production assembly.

COMBIJET is a Certified Hose Assembly & Testing Center for Parker Polyflex Thermoplastic Hoses.



Hydroblasting Services

Combijet Manufacturing and Dememarine Services offer custom made water blasting solutions for your surface preparation needs.

Using the innovative robotic equipment, we are able to carry out washing, hydroblasting and vacuum hydroblasting, whether it is on hulls, in cargo holds, on storage tanks or other. We take up the challenge to position our robots anywhere possible.

The products offer significant Water Blasting advantages over the traditional methods of sand blasting to remove marine growth, industrial coatings and corrosion.

- Ability to work simultaneously in close proximity to other trades or maintenance processes.
- Reduced manpower requirements and fast job delivery
- No Clean up costs
- No access requirements (staging, cranes, platforms, etc.)
- Fast, Safe, Clean and Efficient operation

Contact us to find more details about what we can offer

Personal Protective Equipment

Up to 500 Bar



Protective Clothing
Overall with Hood. Protection level:
Rotary/Fan Jet – 500 bar. Straight Je-200 bar



Protective Apron
Protection level: Rotary/Fan Jet – 500 bar /
Straight Jet – 200 bar



Hose Protection
Placed at the hose connection point to the
gun, to protect the operator from hose burst
or detachment



Protective Boots
Certified for 800 bar protection



Protective Gloves 500 bar



Helmet, with Polycarbonate Visor
and Earmuffs



Whip Check / Hose Grip
Designed to prevent hose whip if the hose couplings or connector fails

Ultra High Pressure up to 3000 Bar



Protective Suit 10/28
Trousers + Jacket incl. Hand Protection
Protection level: 1000bar straight jet /
2800bar rotary jet



Protective Apron 10/28
Protection level: 1000bar straight jet /
2800bar rotary jet



Head Protection
(Helmet with Earmuffs and Visor)
Protection level: up to 3000 bar



Protective Suit 20/30
Trousers + Jacket incl. Hand Protection
Protection level: 2000bar straight jet /
3000bar rotary jet



Protective Apron 20/30
Protection level: 2000bar straight jet /
3000bar rotary jet



Hose Protection
For protection of the operator from hose
detachment/burst. Placed at the hose
connection point to the gun



Protective Gloves 500 bar
incl. Inner glove



Protective Boots
Protection level: Up to 3000 bar



Protective Gaiters
Worn outside the operators boots
Protection level: 2000 bar straight jet / 3000
bar rotary jet

ACCESSORIES

High Pressure Hoses

up to 3000bar



Control Guns

(Any -shut / Dump- style /Pneumatic / Electric)



Straight / Fun Nozzles



Rotating Nozzles



Wet Sandblasting Kits



Foot Valve



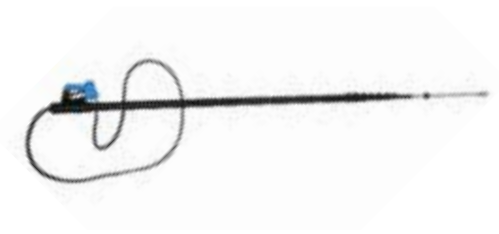
Pipe / Tube Cleaning Nozzles

Ideal for cleaning, unblocking and polishing tubes
Applications include head exchangers and industrial tube bundles
Fixed and Rotary designs for various tube diameters



Telescopic Lances

5 to 15 meters extension height
Extension poles, made of fiberglass or carbon fiber
Ideal for reaching and cleaning high areas



Surface & Deck Blasters

For hydro-blasting of floors and decks.
The setup is on wheels, where the operator navigates the tool over the surface, while arming/disarming the pressure by hand.
The hydroblasting is done by a rotating nozzle holder, enclosed within the body of the tool.



Two Stage Filtration System (30μ/5μ)

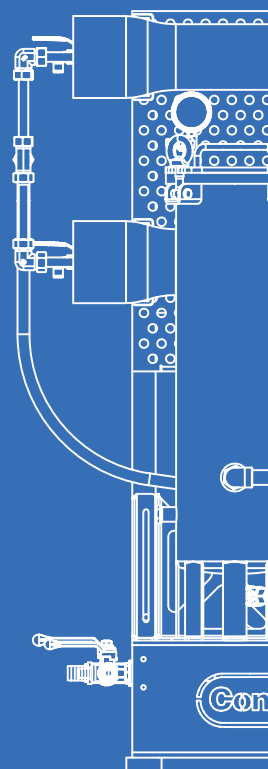
For additional filtration of water feed to the machine. The filter unit consists of a 30 micron 1st stage and a 5 micron 2nd stage



Repair Kits

For Nozzles / Gun / Pump





T: +357 25755866 | info@combijet.com
www.combijet.com